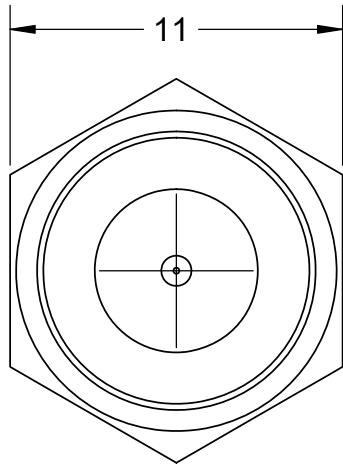
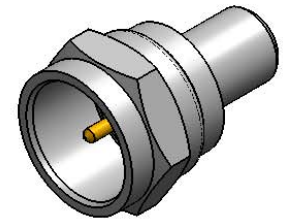
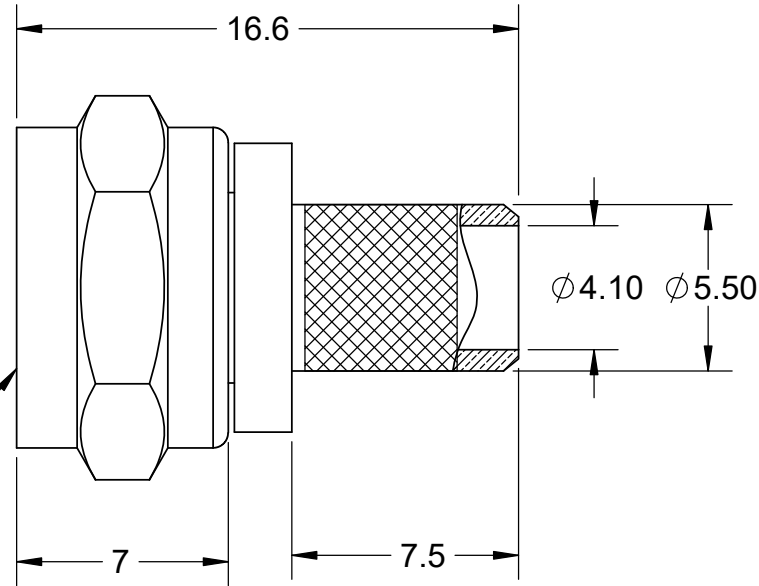


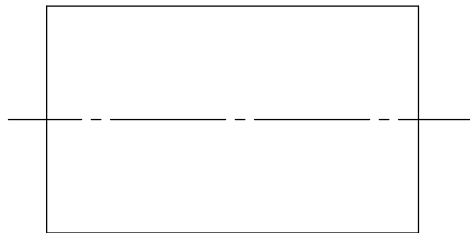
ITEM:	MATERIAL:	FINISH:	NOTES:	REVISIONS				
CONNECTOR BODY	BRASS, NOTE 1	NICKEL, NOTE 9	1. PER QQ-B-626 2. PER QQ-S-764 3. PER QQ-C-530 4. PER QQ-B-750 5. PER MIL-P-19468 6. PER ZZ-R-765 7. PER WW-T-799 8. GOLD PLATED 5µin MIN. OVER NICKEL PLATE 50µin MIN. OVER COPPER STRIKE. 9. NICKEL PLATE 100µin MIN. OVER COPPER STRIKE. 10. PER ASTM-A967 11. GOLD PLATE 30µin MIN. OVER NICKEL PLATE 50µin MIN. OVER COPPER STRIKE. 12. TIN ZINC PLATE 100µin MIN. OVER COPPER STRIKE.	REV	ECR	DESCRIPTION	DRAWN	DATE
CENTER CONTACT	BRASS, NOTE 1	GOLD, NOTE 11		1		ENGINEERING RELEASE	P. BURDGE	02/23/2016
INSULATION	TEFLON, NOTE 5	----						
FERRULE	----	----						
GASKET	----	----						
HEX NUT	----	----						
LOCK WASHER	----	----						



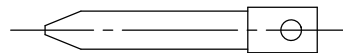
3/8-32 UNEF  
(INSIDE  
THREADS)




SCALE:2/1



FERRULE



CONTACT  
PIN

DO NOT SCALE DRAWING			 <b>Lighthouse Technologies</b> San Diego, CA WWW.RFCONNECTOR.COM
TOLERANCES UNLESS OTHERWISE SPECIFIED			
DIMENSIONS ARE IN MILLIMETERS			TITLE: <b>F, STRAIGHT, PLUG,          CABLE CRIMP, RG-59,</b>
X = ±0.5 X.X = ±0.25 X.XX = ±0.13 ANGLE = ±30°			
CUSTOMER APPROVAL SIGN / DATE:			SIZE PART/DWG. NO: REV <b>A FSM11NT-59 1</b>
ENG APPR.			
CHECKED			SCALE: 4:1 FILE NAME SHEET 1 OF 1
DRAWN	P. BURDGE	02/23/2016	
	NAME	DATE	

PROPRIETARY AND CONFIDENTIAL

UNLESS OTHERWISE SPECIFIED, THIS DOCUMENT CONTAINS LIGHTHORSE TECHNOLOGIES INFORMATION. REPRODUCTION, USE, DISCLOSURE OR TRANSMITTAL OF ALL OR ANY PART OF THIS DOCUMENT IS PROHIBITED EXCEPT TO THE EXTENT APPROVED IN WRITING BY AN AUTHORIZED REPRESENTATIVE OF LIGHTHORSE TECHNOLOGIES. LIGHTHORSE TECHNOLOGIES RESERVES ALL RIGHTS UNDER PATENTS, TRADEMARKS, COPYRIGHTS AND TRADE SECRETS. COPY RIGHTS OF LIGHTHORSE TECHNOLOGIES 2011, ALL RIGHTS RESERVED.

