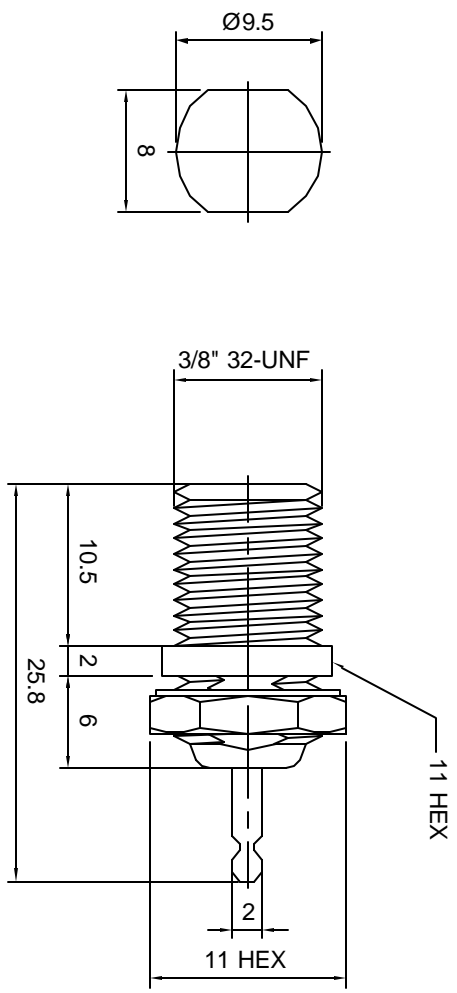



|                        |                          |                |                           |                       |
|------------------------|--------------------------|----------------|---------------------------|-----------------------|
| ITEM                   | MATERIAL                 | FINISH         | Revisions                 |                       |
|                        |                          |                | Description/Approved/Date | Approved M.H. Date    |
| Connector Body         | Brass, Note 1            | Nickel, Note 9 | 1-20=+/-0.2               | 01/25/99              |
| Center Contact: Female | Beryllium Copper, Note 3 | Tin            | 20-30=+/-0.3              | Checked M.H. 01/25/99 |
| Insulation             | Polypropylene            | None           | 30-40=+/-0.4              | Drawn K.R.E. 01/21/99 |
| Ferrule                | --                       | --             | 40-50=+/-0.5              |                       |
| Gasket                 | --                       | --             | 50-100=+/-0.75            |                       |
| Hex Nut                | Brass, Note 1            | Same as body   | 100-300=+/-1.5            |                       |
| Lock Washer            | Brass, Note 1            | Same as body   | Angles=+/-1               |                       |

**Tolerances**  
 1-20=+/-0.2  
 20-30=+/-0.3  
 30-40=+/-0.4  
 40-50=+/-0.5  
 50-100=+/-0.75  
 100-300=+/-1.5  
 Angles=+/-1

**Dimensions are in Millimeters**

|  |   |   |
|--|---|---|
| NOTES (plating thickness in micro-inches): | 5. Per MIL-P-19468  | 9. Nickel pl. 100 min. over copper strike                       |
| 1. Per QQ-B-626                            | 6. Per ZZ-R-765   | 10. Per QQ-P-35   |
| 2. Per QQ-S-764                            | 7. Per WW-T-799   | 11. Gold pl. 30 min. over nickel pl. 50 min. over copper strike |
| 3. Per QQ-C-530                            | 8. Gold pl. 5 min. over nickel pl. 50 min. over copper strike |   |
| 4. Per QQ-B-750                            |   |   |



|                        |                          |                |  |  |           |
|------------------------|--------------------------|----------------|--|--|-----------|
| ITEM                   | MATERIAL                 | FINISH         |  <b>Lighthorse Technologies, Inc.</b><br>4907 Morena Boulevard, #1411<br>San Diego, California 92117<br>Part Number: <b>LTFSF73NP</b> |  |           |
| Connector Body         | Brass, Note 1            | Nickel, Note 9 | Description  | F front mount bulkhead jack with solder tab termination. |           |
| Center Contact: Female | Beryllium Copper, Note 3 | Tin            | Nickel plated brass body, polypropylene dielectric   |  |           |
| Insulation             | Polypropylene            | None           | Scale  | 2:1  |           |
| Ferrule                | --                       | --             | Drawing No.  | F/SF73   | File Name |
| Gasket                 | --                       | --             |  |  | FSF73     |
| Hex Nut                | Brass, Note 1            | Same as body   |  |  |           |
| Lock Washer            | Brass, Note 1            | Same as body   |  |  |           |