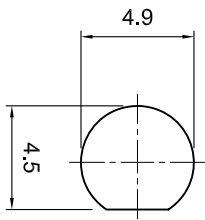


Revisions	Approved	Date
Description/Approved/Date	M.H.	4/25/03
	Checked	Date
	M.H.	4/24/03
	Drawn	Date
	K.R.E.	4/24/03

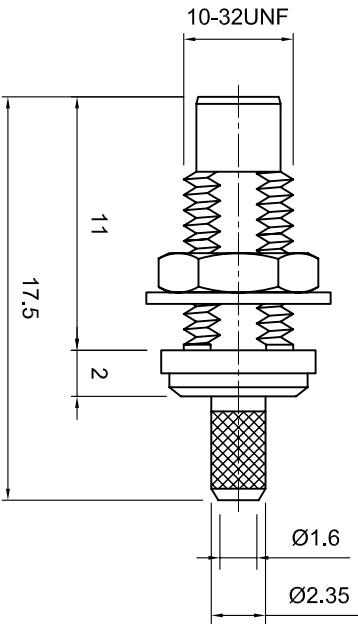
Tolerances
1-20=+/-0.2
20-30=+/-0.3
30-40=+/-0.4
40-50=+/-0.5
50-100=+/-0.75
100-300=+/-1.5
Angles=+/-1

Dimensions are in Millimeters

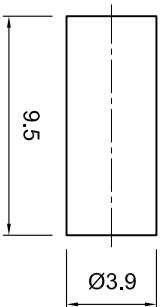
NOTES (plating thickness in micro-inches):
5. Per MIL-P-19468
6. Per ZZ-R-765
7. Per WW-T-799
8. Gold pl. 5 min. over nickel pl. 50 min. over copper strike
9. Nickel pl. 100 min. over copper strike
10. Per QQ-P-35
11. Gold pl. 30 min. over nickel pl. 50 min. over copper strike



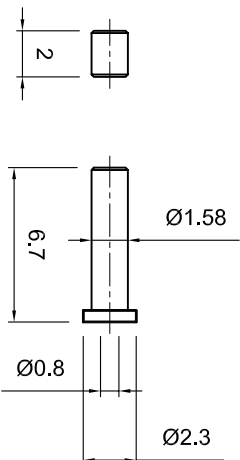
MOUNTING HOLE CUTOUT




REAR INSULATOR



BUSHING



ITEM	MATERIAL	FINISH
Connector Body	Brass, Note 1	Gold, Note 8
Center Contact: Male	Brass, Note 1	Gold, Note 11
Insulation	Teflon, Note 5	None
Ferrule	Annealed Copper, Note 7	Same as body
Gasket	--	--
Hex Nut	--	--
Lock Washer	--	--



Lighthouse Technologies, Inc.
5640 Kearny Mesa Rd. Suite N
San Diego, California 92111
Part Number: **LT-SCSF13GT-178**

Description: SMC crimp type bulkhead male jack for RG-178 cable.

Scale	Drawing No.	File Name
3:1	SMC/SCSF13-178	SCSF13-178