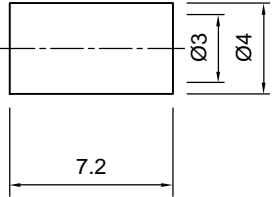
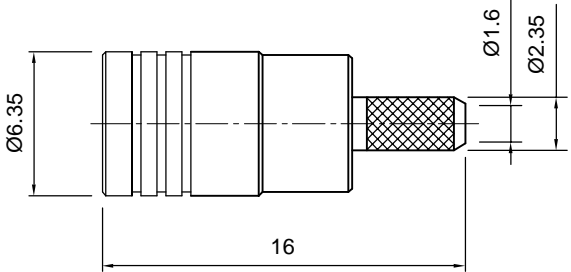
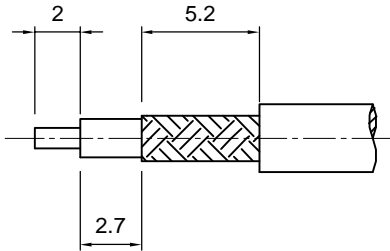


<b>Tolerances</b> 1-20=+/-0.2 20-30=+/-0.3 30-40=+/-0.4 40-50=+/-0.5 50-100=+/-0.75 100-300=+/-1.5 Angles=+/-1 <b>Dimensions are in Millimeters</b>	Revisions Description/Approved/Date	Approved M.H.	Date 9/07/04
		Checked M.H.	Date 9/07/04
		Drawn K.R.E.	Date 9/07/04
NOTES (plating thickness in micro-inches): 1. Per QQ-B-626 2. Per QQ-S-764 3. Per QQ-C-530 4. Per QQ-B-750 5. Per MIL-P-19468 6. Per ZZ-R-765 7. Per WW-T-799 8. Gold pl. 5 min. over nickel pl. 50 min. over copper strike 9. Nickel pl. 100 min. over copper strike 10. Per QQ-P-35 11. Gold pl. 5 min. over nickel pl. 50 min. over copper strike			

**RECOMMENDED  
CABLE STRIPPING DIM'S**



ITEM	MATERIAL	FINISH
Connector Body	Brass, Note 1	Nickel, Note 9
Center Contact: M	Brass, Note 1	Gold, Note 11
Insulation	Teflon, Note 5	None
Ferrule	Annealed Copper, Note 7	Same as body
Gasket		None
Hex Nut		Same as body
Lock Washer		Same as body

**Lighthouse Technologies, Inc.**  
4907 Morena Boulevard, #1411  
San Diego, California 92117

Part Number:  
**LTI-SBSM11NT-316**

Description SMB crimp plug receptacle for RG 316 cable group.		
Nickel plated brass body, teflon dielectric.		
Scale 1:1	Drawing No. SBSM11-316	File Name SBSM11-316