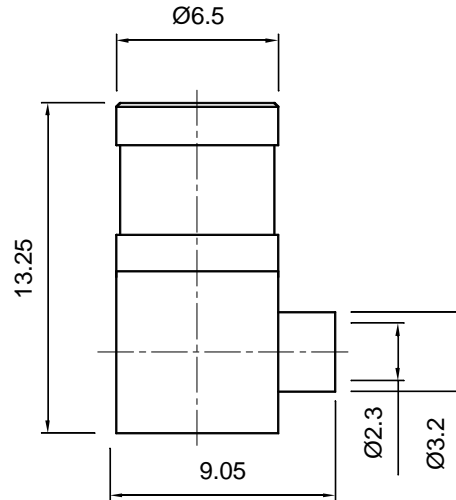


	<b>Tolerances</b> 1-20=+/-0.2 20-30=+/-0.3 30-40=+/-0.4 40-50=+/-0.5 50-100=+/-0.75 100-300=+/-1.5 Angles=+/-1 <b>Dimensions are in Millimeters</b>	Revisions	Approved	Date
		Description/Approved/Date	M.H.	6/30/01
		1. Crimp stem O.D. changed from 2.7 to 2.35 / M.H./3-21-02	Checked M.H.	Date 6/30/01
			Drawn K.R.E.	Date 6/27/01
NOTES (plating thickness in micro-inches):		5. Per MIL-P-19468	9. Nickel pl. 100 min. over copper strike	
1. Per QQ-B-626	6. Per ZZ-R-765	7. Per WW-T-799	10. Per QQ-P-35	
2. Per QQ-S-764	8. Gold pl. 5 min. over nickel pl. 50 min. over copper strike		11. Gold pl. 30 min. over nickel pl. 50 min. over copper strike	
3. Per QQ-C-530				
4. Per QQ-B-750				



ITEM	MATERIAL	FINISH	Lighthouse Technologies, Inc.		
Connector Body	Brass, Note 1	Gold, Note 8	4907 Morena Boulevard, #1411 San Diego, California 92117 Part Number: <b>LTI-SBLM31GT-086</b>		
Center Contact: Female	Beryllium Copper, Note 3	Gold, Note 11			
Insulation	Teflon, Note 5	None			
Ferrule	Annealed Copper, Note 7	Same as body	Description		
Gasket	--	--	SMB right angle solder plug receptacle for semi-rigid .086 cable.		
Hex Nut	--	--	Gold plated brass body, teflon dielectric.		
Lock Washer	--	--	Scale	Drawing No.	File Name
			3:1	SMB/SBLM31-086	SBLM31-086