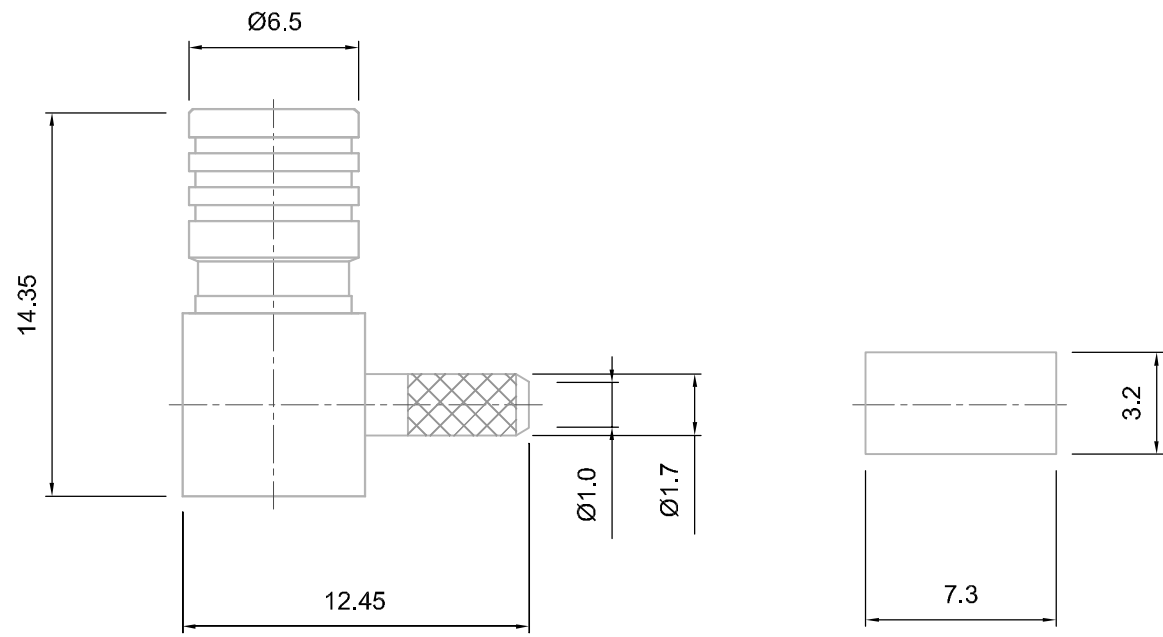


Tolerances
 1-20=+/-0.2
 20-30=+/-0.3
 30-40=+/-0.4
 40-50=+/-0.5
 50-100=+/-0.75
 100-300=+/-1.5
 Angles=+/-1
Dimensions are in Millimeters

Revisions Description/Approved/Date	Approved M.H.	Date 6/30/99
1. Crimp stem O.D. changed from 2.7 to 2.35 / M.H./3-21-02	Checked M.H.	Date 6/30/99
	Drawn K.R.E.	Date 6/27/99
NOTES (plating thickness in micro-inches): 1. Per QQ-B-626 2. Per QQ-S-764 3. Per QQ-C-530 4. Per QQ-B-750 5. Per MIL-P-19468 6. Per ZZ-R-765 7. Per WW-T-799 8. Gold pl. 5 min. over nickel pl. 50 min. over copper strike 9. Nickel pl. 100 min. over copper strike 10. Per QQ-P-35 11. Gold pl. 30 min. over nickel pl. 50 min. over copper strike		



ITEM	MATERIAL	FINISH
Connector Body	Brass, Note 1	Gold, Note 8
Center Contact: Female	Beryllium Copper, Note 3	Gold, Note 11
Insulation	Teflon, Note 5	None
Ferrule	Annealed Copper, Note 7	Same as body
Gasket	--	--
Hex Nut	--	--
Lock Washer	--	--

Lighthouse Technologies, Inc.

5640 Kearny Mesa Road, Suite N
 San Diego, California 92111

Part Number:
LTI-SBLM11GT-178

Description		
SMB right angle crimp plug receptacle for RG-178.		
Gold plated brass body, Teflon dielectric.		
Scale	Drawing No.	File Name
3:1	SMB/SBLM11-178	SBLM11-178