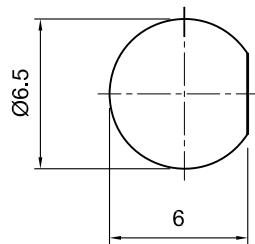
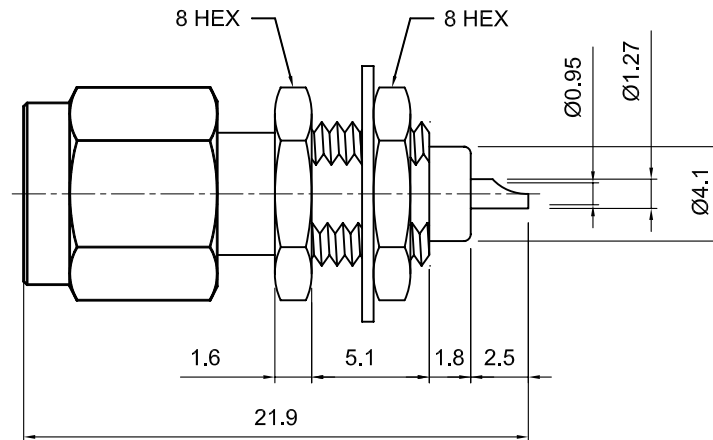


<b>Tolerances</b> 1-20=+/-0.2 20-30=+/-0.3 30-40=+/-0.4 40-50=+/-0.5 50-100=+/-0.75 100-300=+/-1.5 Angles=+/-1 <b>Dimensions are In Millimeters</b>	Revisions	Approved	Date
	Description/Approved/Date	M.H.	07/01/99
		Checked	Date
		M.H.	07/01/99
	Drawn	Date	
	K.R.E.	06/30/99	
NOTES (plating thickness in micro-inches): 1. Per QQ-B-626 2. Per QQ-S-764 3. Per QQ-C-530 4. Per QQ-B-750 5. Per MIL-P-19468 6. Per ZZ-R-765 7. Per WW-T-799 8. Gold pl. 5 min. over nickel pl. 50 min. over copper strike 9. Nickel pl. 100 min. over copper strike 10. Per QQ-P-35 11. Gold pl. 30 min. over nickel pl. 50 min. over copper strike			



MOUNTING HOLE CUTOUT



ITEM	MATERIAL	FINISH
Connector Body	Brass, Note 1	Gold, Note 8
Center Contact: M	Brass, Note 1	Gold, Note 11
Insulation	Teflon, Note 5	None
Ferrule	--	--
Gasket	--	--
Hex Nut	Brass, Note 1	Same as body
Lock Washer	Brass, Note 1	Same as body

**Lighthouse Technologies, Inc.**

5640 Kearny Mesa Rd. Suite N  
San Diego, California 92111

Part Number:  
**LTI-SASM43GT**

Description		
SMA front mount bulkhead plug with solder cup termination.		
Gold plated brass body, teflon dielectric.		
Scale	Drawing No.	File Name
3:1	SMA/SASM43GT	SASM43GT