

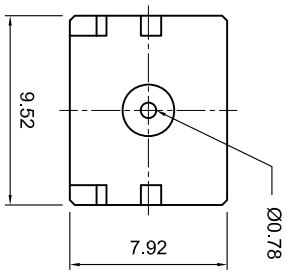
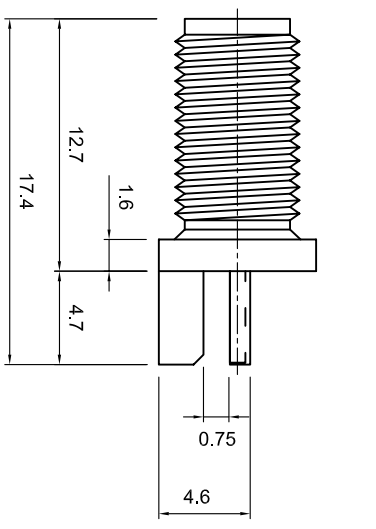
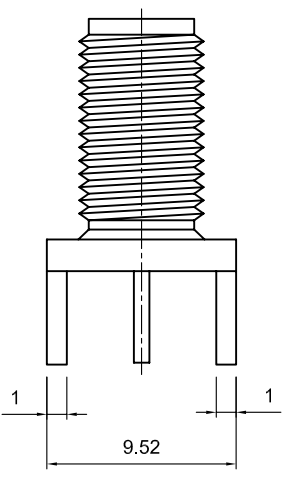
Tolerances	
1-20=+/-0.2	
20-30=+/-0.3	
30-40=+/-0.4	
40-50=+/-0.5	
50-100=+/-0.75	
100-300=+/-1.5	
Angles=+/-1	

**Dimensions are in Millimeters**


Revisions	Approved	Date
Description/Approval/Date	Checked	Date
	Drawn	Date
	S/A	

NOTES (plating thickness in microinches):

1. Per QQ-B-626	6. Per MIL-P-19488	9. Nickel pl. 100 min. over copper strike
2. Per QQ-S-764	7. Per WW-1-799	10. Gold pl. 5 min. over nickel pl. 50 min. over copper strike
3. Per QQ-C-530	8. Gold pl. 5 min. over nickel pl. 50 min. over copper strike	11. Gold pl. 5 min. over nickel pl. 50 min. over copper strike
4. Per QQ-B-750		



ITEM	MATERIAL	FINISH
Connector Body	Brass, Note 1	Gold, Note 8
Center Contact: Female	BeCu, Note 3	Gold, Note 11
Insulation	Teflon, Note 5	None
Ferrule	--	--
Gasket	--	--
Hex Nut	--	--
Lock Washer	--	--



**Lighthorse Technologies, Inc.**  
9511 Ridgely Court, Suite B  
San Diego, CA 92123

Part Number:  
**LTI-SASF95MGT-3**

Description	Scale	Drawing No.	File Name
SMA End Launch Jack, Medium Barrel Length, wide flange for 0.031" PCB	1:1	SASF95MGT-3	SASF95MGT-3