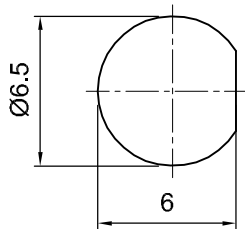
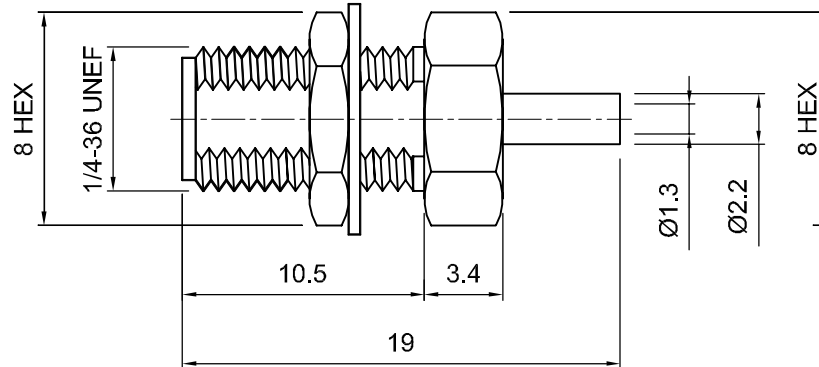



Tolerances 1-20=+/-0.2 20-30=+/-0.3 30-40=+/-0.4 40-50=+/-0.5 50-100=+/-0.75 100-300=+/-1.5 Angles=+/-1 Dimensions are in Millimeters	Revisions Description/Approved/Date	Approved M.H.	Date 10/15/00
		Checked M.H.	Date 10/13/00
		Drawn K.R.E.	Date 10/13/00
NOTES (plating thickness in micro-inches): 1. Per QQ-B-626 2. Per QQ-S-764 3. Per QQ-C-530 4. Per QQ-B-750			
5. Per MIL-P-19468 6. Per ZZ-R-765 7. Per WW-T-799 8. Gold pl. 5 min. over nickel pl. 50 min. over copper strike			
9. Nickel pl. 100 min. over copper strike 10. Per QQ-P-35 11. Gold pl. 30 min. over nickel pl. 50 min. over copper strike			



RECOMMENDED CUTOUT



ITEM	MATERIAL	FINISH	Lighthouse Technologies, Inc.		
Connector Body	Brass, Note 1	Gold, Note 8		5640 Kearny Mesa Road, Suite N San Diego, CA 92111	
Center Contact: Female	Beryllium Copper, Note 3	Gold, Note 11		Part Number: LTI-SASF33GT-047	
Insulation	Teflon, Note 5	None	Description SMA bulkhead solder jack for .047 semi-rigid cable. Gold plated		
Ferrule	--	--	brass body, teflon dielectric.		
Gasket	--	--	Scale 3:1	Drawing No. SMA/SASF33-047	File Name SASF33-047
Hex Nut	Brass, Note 1	Same as body			
Lock Washer	Brass, Note 1	Same as body			