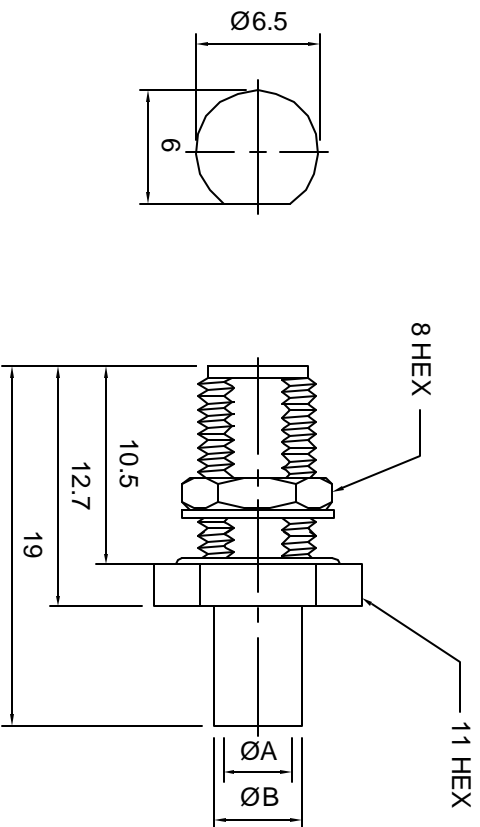


Revisions		Approved	Date
Description/Approved/Date	Checked	M.H.	10/12/99
	Checked	M.H. <td>10/12/99</td>	10/12/99
	Drawn	K.R.E. <td>Date 10/10/99</td>	Date 10/10/99

NOTES (plating thickness in micro-inches):

- Per QQ-B-626
- Per QQ-S-764
- Per QQ-C-530
- Per QQ-B-750
- Per MIL-P-19468
- Per ZZ-R-765
- Per WW-T-799
- Gold pl. 50 min. over nickel pl. 50 min. over copper strike
- Nickel pl. 100 min. over copper strike
- Per QQ-P-35
- Gold pl. 30 min. over nickel pl. 50 min. over copper strike

.085" SEMI-RIGID CABLE: A=2.2 MIN B=3.0 MIN
.141" SEMI-RIGID CABLE: A=3.6 MIN B=4.6 MIN



ITEM	MATERIAL	FINISH	Tolerances
Connector Body	Brass, Note 1	Tri-metal alloy (white bronze)	1-20=+/-0.2 20-30=+/-0.3 30-40=+/-0.4 40-50=+/-0.5 50-100=+/-0.75 100-300=+/-1.5 Angles=+/-1
Center Contact: Female	Beryllium Copper, Note 3	Gold, Note 11	
Insulation	Teflon, Note 5	None	
Ferrule	--	--	
Gasket	Silicone Rubber, Note 6	None	
Hex Nut	Brass, Note 1	Same as body	
Lock Washer	Brass, Note 1	Same as body	

Dimensions are in Millimeters

Part Number: **LTI-SASF33M3T-.141**

Description: SMA bulkhead jack for .141 semi-rigid cable

Scale: 2:1

File: SASF33

Lighthouse Technologies, Inc.
4907 Morena Boulevard, #1411
San Diego, CA 92117