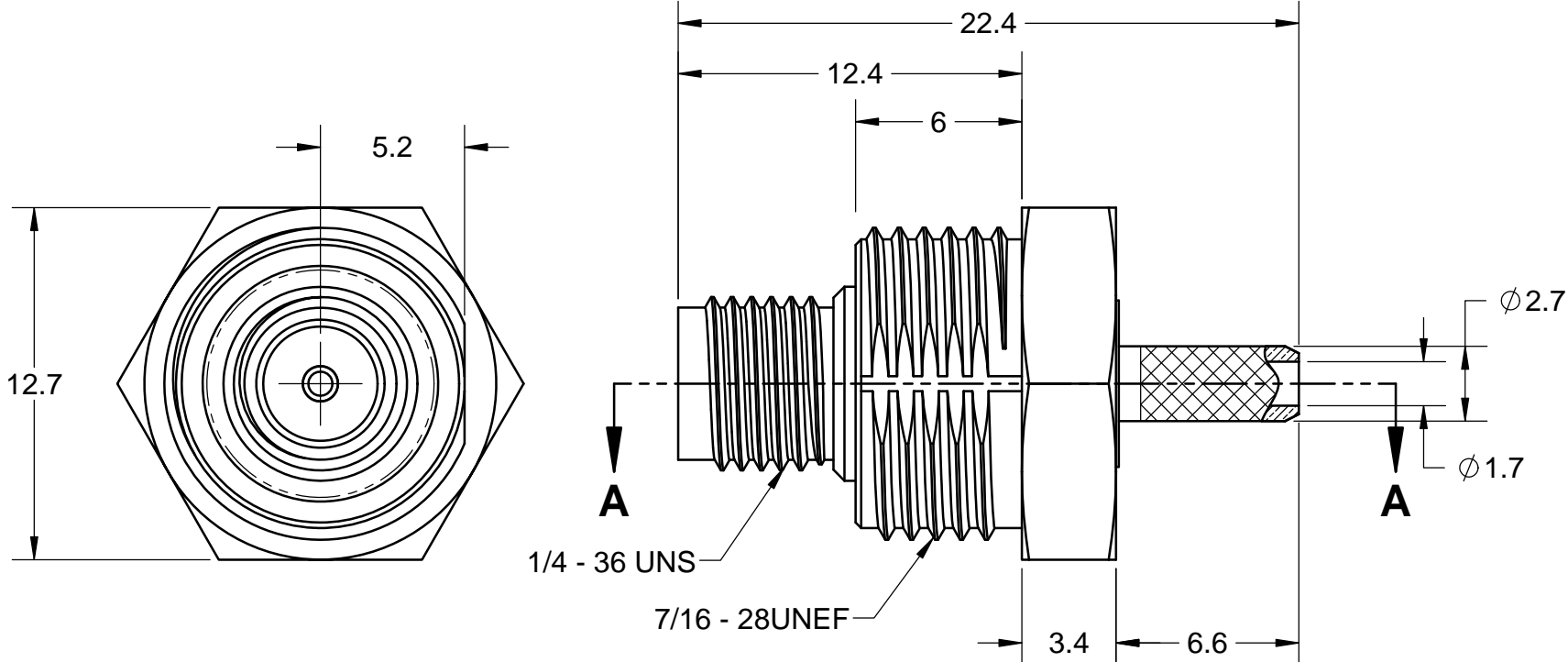
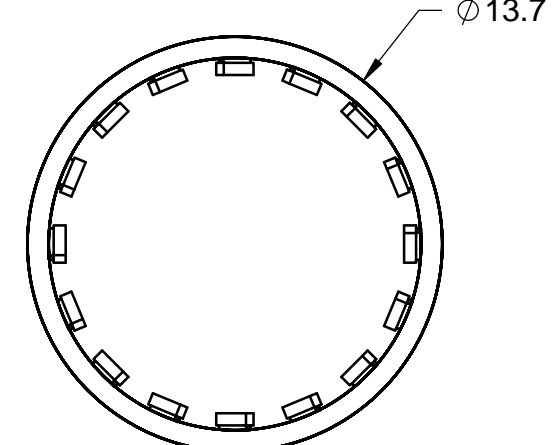
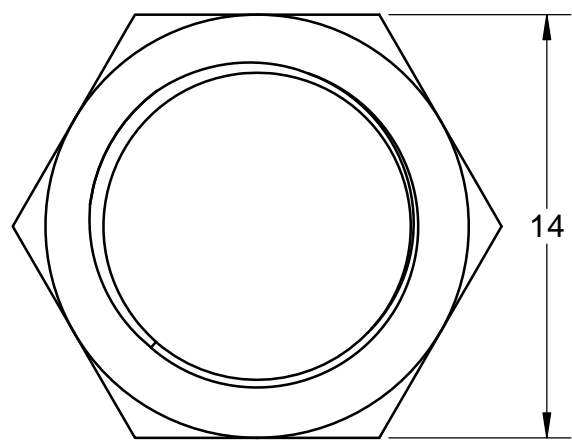
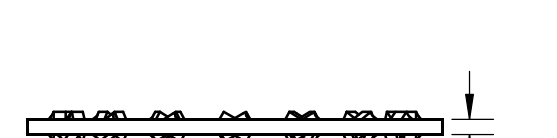


ITEM:	MATERIAL:	FINISH:	NOTES:
CONNECTOR BODY	BRASS, NOTE 1	GOLD, NOTE 8	1. PER QQ-B-626 2. PER QQ-S-764 3. PER QQ-C-530 4. PER QQ-B-750 5. PER MIL-P-19468 6. PER ZZ-R-765 7. PER WW-T-799 8. GOLD PLATED 5µin MIN. OVER NICKEL PLATE 50µin MIN. OVER COPPER STRIKE. 9. NICKEL PLATE 100µin MIN. OVER COPPER STRIKE. 10. PER ASTM-A967 11. GOLD PLATE 30µin MIN. OVER NICKEL PLATE 50µin MIN. OVER COPPER STRIKE. 12. TIN ZINC PLATE 100µin MIN. OVER COPPER STRIKE.
CENTER CONTACT	BERYLLIUM COPPER, NOTE 3	GOLD, NOTE 11	
INSULATION	TEFLON, NOTE 5	----	
FERRULE	ANNEALED COPPER, NOTE 7	GOLD, NOTE 7	
GASKET	----	----	
HEX NUT	BRASS, NOTE 1	GOLD, NOTE 8	
LOCK WASHER	BRASS, NOTE 1	GOLD, NOTE 8	

REVISIONS				
REV	ECR	DESCRIPTION	DRAWN	DATE
A		PRODUCTION RELEASE	P. BURDGE	08/25/2015

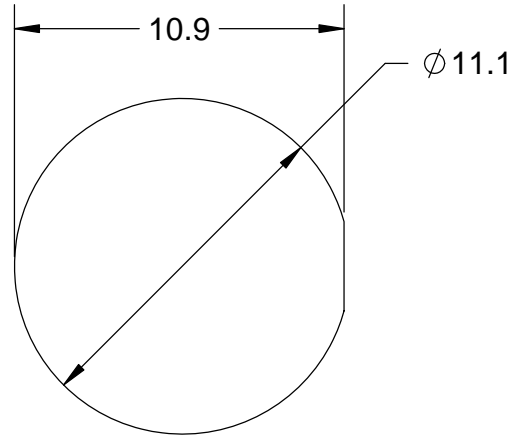


HEX NUT AND WASHER
REMOVED FOR CLARITY

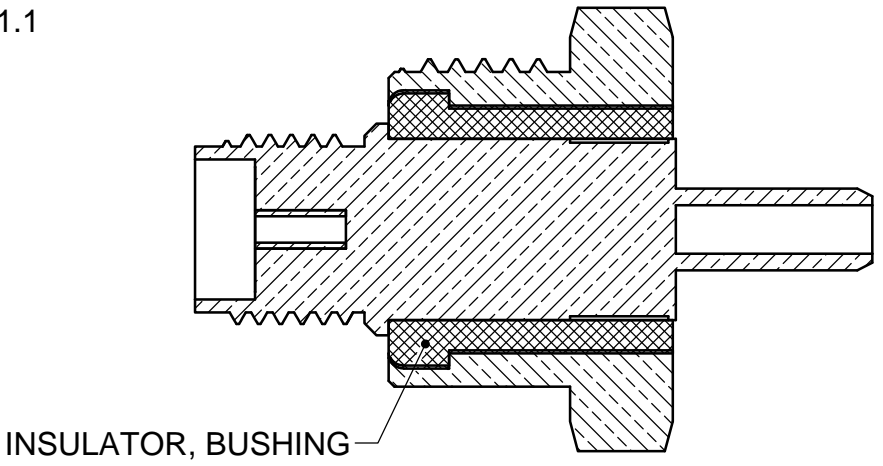


NUT, HEX

WASHER, INT TOOTH



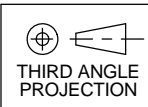
RECOMMENDED
HOLE CUTOUT



INSULATOR, BUSHING

SECTION A-A

DO NOT SCALE DRAWING
TOLERANCES UNLESS OTHERWISE SPECIFIED
DIMENSIONS ARE IN MILLIMETERS
X = ±0.5
X.X = ±0.25
X.XX = ±0.13
ANGLE = ±30°



CUSTOMER APPROVAL		
SIGN / DATE:		
ENG APPR.	M. HELD	08/25/2105
CHECKED	M. HELD	08/25/2105
DRAWN	P. BURDGE	04/15/2013
NAME		DATE

Lighthouse Technologies
San Diego, CA
WWW.RFCONNECTOR.COM

TITLE: SMA, STRAIGHT, JACK,
BULKHD MNT, ISOLATED, CRIMP,
GOLD, TEFLON

SIZE	PART/DWG. NO:	REV
B	SASF13REGT-316-X1	A

PROPRIETARY AND CONFIDENTIAL
UNLESS OTHERWISE SPECIFIED: THIS DOCUMENT CONTAINS LIGHTHORSE TECHNOLOGIES INFORMATION. REPRODUCTION, USE, DISCLOSURE OR TRANSMITTAL OF ALL OR ANY PART OF THIS DOCUMENT IS PROHIBITED EXCEPT TO THE EXTENT APPROVED IN WRITING BY AN AUTHORIZED REPRESENTATIVE OF LIGHTHORSE TECHNOLOGIES. LIGHTHORSE TECHNOLOGIES RESERVES ALL RIGHTS UNDER PATENTS, TRADEMARKS, COPY RIGHTS AND TRADE SECRETS. COPY RIGHTS OF LIGHTHORSE TECHNOLOGIES 2011, ALL RIGHTS RESERVED.

