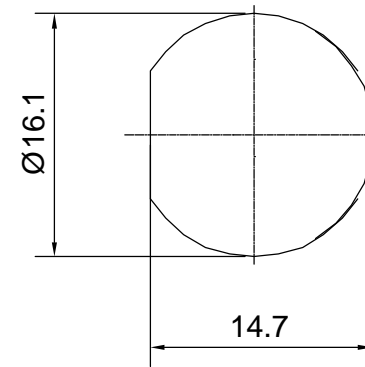
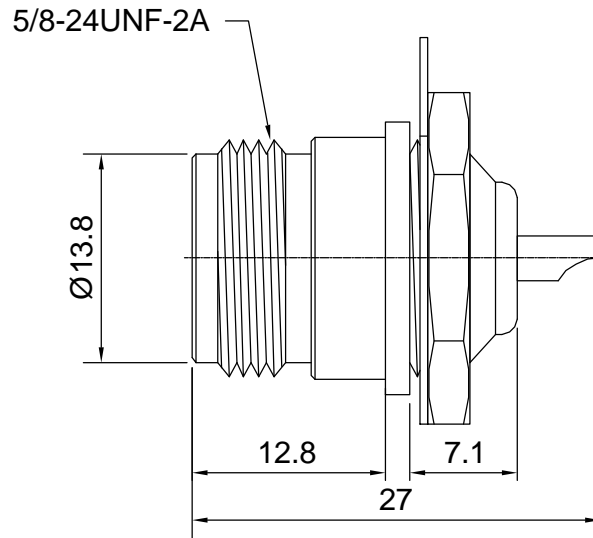



| | | | |
|---|--|------------------|------------------|
| Tolerances 1-20=+/-0.2 20-30=+/-0.3 30-40=+/-0.4 40-50=+/-0.5 50-100=+/-0.75 100-300=+/-1.5 Angles=+/-1 Dimensions are in Millimeters | Revisions Description/Approved/Date | Approved M.H. | Date 06/01/00 |
| | | Checked M.H. | Date 06/01/00 |
| | | Drawn K.R.E. | Date 06/01/00 |
| | NOTES (plating thickness in micro-inches): 1. Per QQ-B-626 2. Per QQ-S-764 3. Per QQ-C-530 4. Per QQ-B-750 | | |



MOUNTING HOLE

| ITEM | MATERIAL | FINISH |  Lighthouse Technologies, Inc. 4907 Morena Boulevard, #1411 San Diego, California 92117 Part Number: LTI-NSF43NT | | |
|------------------------|--------------------------|---------------|---|--|--|
| Connector Body | Brass, Note 1 | Gold, Note 8 | Description N Bulkhead Panel Jack With Solder Cup Termination | | |
| Center Contact: Female | Beryllium Copper, Note 3 | Gold, Note 11 | | | |
| Insulation | Teflon, Note 5 | None | Scale 2:1 | | |
| Ferrule | -- | -- | | | |
| Gasket | -- | -- | Drawing No. N/NSF43 | | |
| Hex Nut | Brass, Note 1 | Same as body | | | |
| Lock Washer | Brass, Note 1 | Same as body | File Name NSF43 | | |