

All components used in this connector conform to RoHS standards.



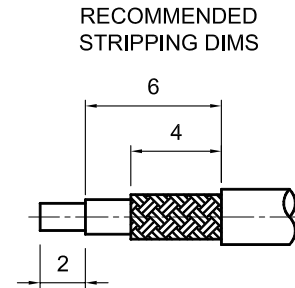
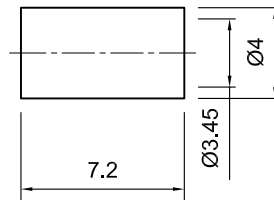
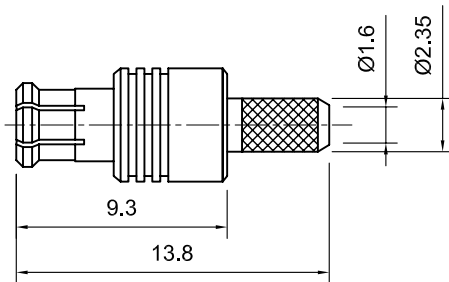
Tolerances

- 1-20=+/-0.2
- 20-30=+/-0.3
- 30-40=+/-0.4
- 40-50=+/-0.5
- 50-100=+/-0.75
- 100-300=+/-1.5
- Angles=+/-1

Dimensions are in Millimeters

Revisions Description/Approved/Date	Approved M.H.	Date 6/15/01
	Checked M.H.	Date 6/15/01
	Drawn K.R.E.	Date 6/13/01
NOTES (plating thickness in micro-inches): 1. Per QQ-B-626 2. Per QQ-S-764 3. Per QQ-C-530 4. Per QQ-B-750 5. Per MIL-P-19468 6. Per ZZ-R-765 7. Per WW-T-799 8. Gold pl. 5 min. over nickel pl. 50 min. over copper strike 9. Nickel pl. 100 min. over copper strike 10. Per QQ-P-35 11. Gold pl. 30 min. over nickel pl. 50 min. over copper strike		

Approved by:
Date:



ITEM	MATERIAL	FINISH
Connector Body	Phosphor Bronze, Note 4	Gold, Note 8
Center Contact: Male	Brass, Note 1	Gold, Note 11
Insulation	Teflon, Note 5	None
Ferrule	Annealed Copper, Note 7	--
Gasket	--	--
Hex Nut	--	--
Lock Washer	--	--



Lighthouse Technologies, Inc.

9511 Ridgehaven Court, Suite B
San Diego, California 92123

Part Number:
LTI-MXSM11GT-316

Description MCX crimp plug for RG-316 cable. Gold plated body, teflon dielectric.		
Scale 3:1	Drawing No. MCX/MXSM11-316	File Name MXSM11-316