

All components used in this connector conform to RoHS standards.



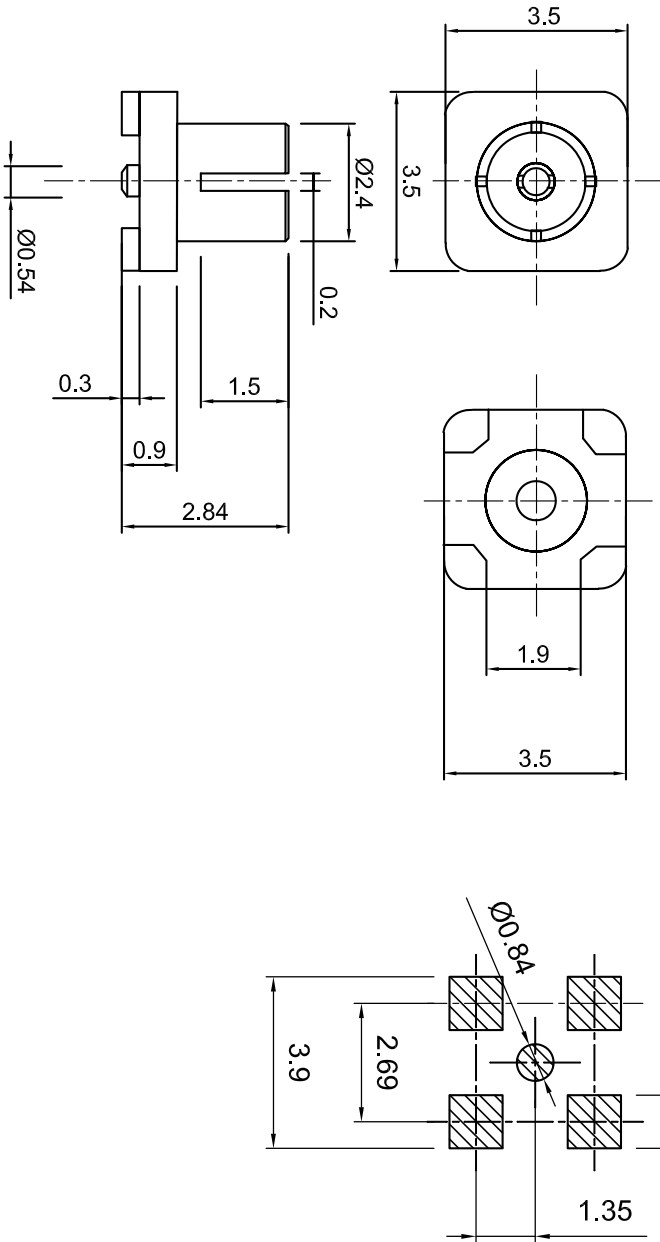
**Tolerances**  
 1-20=+/-0.2  
 20-30=+/-0.3  
 30-40=+/-0.4  
 40-50=+/-0.5  
 50-100=+/-0.75  
 100-300=+/-1.5  
 Angles=+/-1

**Dimensions are in Millimeters**

Revisions		Approved	Date
Description/Approved/Date	Checked	MH	
	LM		Date
	Drawn SA		Date

NOTES (plating thickness in micro-inches):

1. Per QQ-B-626	6. Per ZZ-R-765	9. Nickel pl. 100 min. over copper strike
2. Per QQ-S-764	7. Per WW-T-799	10. Per QQ-P-35
3. Per QQ-C-530	8. Gold pl. 5 min. over nickel pl. 50 min. over copper strike	11. Gold pl. 30 min. over nickel pl. 50 min. over copper strike
4. Per QQ-B-750		



ITEM	MATERIAL	FINISH
Connector Body	Brass, Note 1	Gold, Note 8
Center Contact: F	BeCu, Note 3	Gold, Note 11
Insulation	Teflon, Note 5	--
Ferrule	--	--
Gasket	--	--
Hex Nut	--	--
Lock Washer	--	--

**Lighthouse Technologies, Inc.**  
 9511 Ridgeway Court, Suite B  
 San Diego, California 92123  
 Part Number:  
**LTI-IPXS66GT**

Description  
 IPX SMT Jack receptacle, gold plated brass, Teflon dielectric

Mates to IPXSM66AL

Scale 4:1

Drawing No. IPXS66GT

File Name IPXS66GT-X1