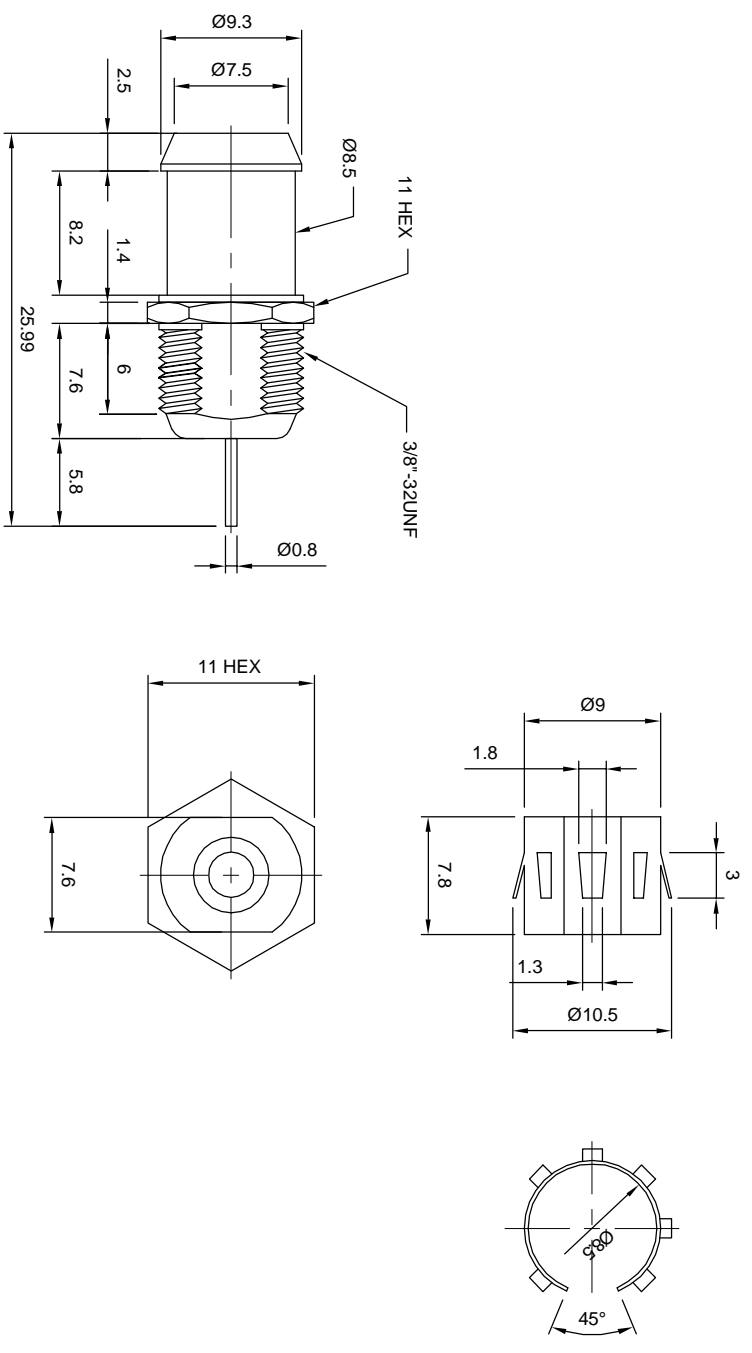



Revisions		Approved	Date
Description/Approved Date		M.H.	1/3/99
1. Length of Thread changed / M.H. / 7/18/00		Checked M.H.	1/3/99
Drawn	K.R.E.	Date	1/3/99

NOTES (plating thickness in micro-inches):

- Per QQ-B-626
- Per QQ-S-764
- Per QQ-C-530
- Per QQ-B-750
- Per MIL-P-19468
- Per ZZ-R-765
- Per WW-T-799
- Gold pl. 50 min. over nickel pl. 50 min. over copper strike
- Nickel pl. 100 min. over copper strike
- Per QQ-P-35
- Gold pl. 30 min. over nickel pl. 50 min. over copper strike

Dimensions are in Millimeters



ITEM	MATERIAL	FINISH	Description
Connector Body	Brass, Note 1	Bright Acid Tin	 <p>Lighthouse Technologies, Inc. 4907 Morena Boulevard, #1411 San Diego, California 92117 Part Number: GSF93BTT</p>
Center Contact: Female	Beryllium Copper, Note 3	Bright Acid Tin	
Insulation	Teflon, Note 5	None	
Ferrule	--	--	
Gasket	--	--	
Hex Nut	--	--	Description G bulkhead jack with solder post
Lock Washer	--	--	
Scale		2:1	Drawing No. G/GSF93
File Name		GSF93	