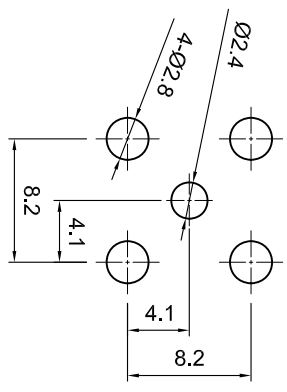
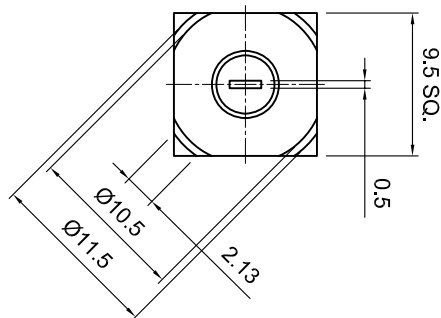
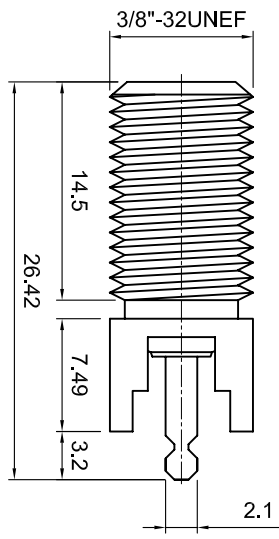


Tolerances 1-20=+/-0.2 20-30=+/-0.3 30-40=+/-0.4 40-50=+/-0.5 50-100=+/-0.75 100-300=+/-1.5 Angles=+/-1	Dimensions are in Millimeters	
	Revisions Description/Approval/Date 	Approved M.H. Checked M.H. Drawn K.R.E.
NOTES (plating thickness in microinches): 1. Per QQ-B-626 2. Per QQ-S-764 3. Per QQ-C-530 4. Per QQ-B-750 5. Per MIL-P-19488 6. Per ZZ-R-765 7. Per WW-1-799 8. Gold pl. 5 min. over nickel pl. 50 min. over copper strike 9. Nickel pl. 100 min. over copper strike 10. Per QQ-P-35 11. Gold pl. 5 min. over nickel pl. 50 min. over copper strike		



RECOMMENDED MOUNTING HOLE

ITEM	MATERIAL	FINISH
Connector Body	Brass, Note 1	Nickel, Note 9
Center Contact: F	Brass, Note 1	Nickel, Note 9
Insulation	Polypropylene	None
Ferrule	--	--
Gasket	--	--
Hex Nut	--	--
Lock Washer	--	--



Lighthouse Technologies, Inc.
5640 Keamy Mesa Rd, Suite N
San Diego, California 92111
Part Number:
LTI-FSF54NP

Description F PCB Jack, Long Barrel, Short Legs		
Scale 1:1	Drawing No. FSF54NP	File Name FSF54