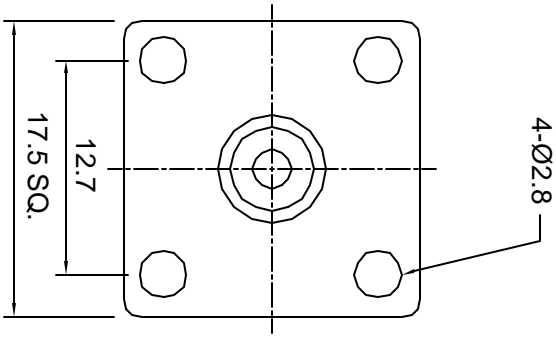
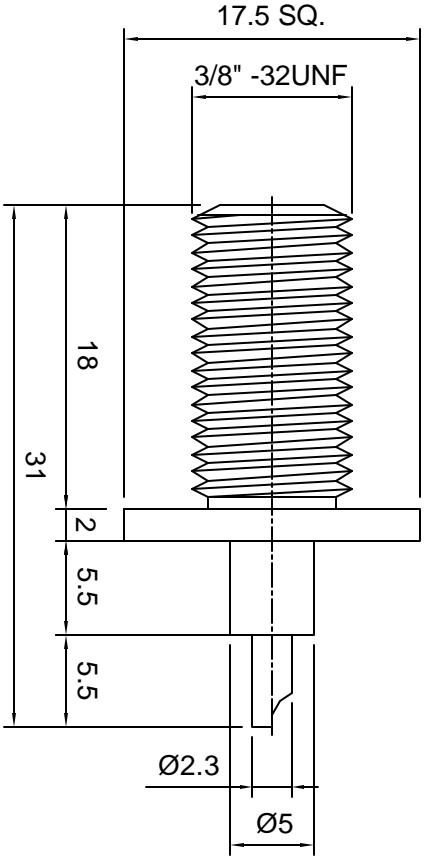


		Tolerances 1-20=+/-0.2 20-30=+/-0.3 30-40=+/-0.4 40-50=+/-0.5 50-100=+/-0.75 100-300=+/-1.5 Angles=+/-1													
		Dimensions are in Millimeters													
		Revisions <table border="1"> <thead> <tr> <th>Description/Approved/Date</th> <th>Checked</th> <th>Approved</th> <th>Date</th> </tr> </thead> <tbody> <tr> <td>1. Flange changed from 18.5 SQ to 17.5 SQ / MH / 07/27/02</td> <td>M.H.</td> <td>M.H.</td> <td>03/30/01</td> </tr> <tr> <td></td> <td>Drawn</td> <td>K.R.E.</td> <td>03/29/01</td> </tr> </tbody> </table>		Description/Approved/Date	Checked	Approved	Date	1. Flange changed from 18.5 SQ to 17.5 SQ / MH / 07/27/02	M.H.	M.H.	03/30/01		Drawn	K.R.E.	03/29/01
Description/Approved/Date	Checked	Approved	Date												
1. Flange changed from 18.5 SQ to 17.5 SQ / MH / 07/27/02	M.H.	M.H.	03/30/01												
	Drawn	K.R.E.	03/29/01												
		NOTES (plating thickness in micro-inches): 1. Per QQ-B-626 2. Per QQ-S-764 3. Per QQ-C-530 4. Per QQ-B-750 5. Per MIL-P-19468 6. Per ZZ-R-765 7. Per WW-T-799 8. Gold pl. 5 min. over nickel pl. 50 min. over copper strike 9. Nickel pl. 100 min. over copper strike 10. Per QQ-P-35 11. Gold pl. 30 min. over nickel pl. 50 min. over copper strike													



ITEM	MATERIAL	FINISH
Connector Body	Brass, Note 1	Nickel, Note 9
Center Contact: Female	Brass, Note 1	Nickel
Insulation	Teflon, Note 5	None
Ferrule	--	--
Gasket	--	--
Hex Nut	--	--
Lock Washer	--	--


Lighthouse Technologies, Inc.
 4907 Morena Boulevard, #1411
 San Diego, California 92117
 Part Number:
LTI-FSF42SFNT

Description		
F panel mount jack with solder cup termination.		
Nickel plated brass body, teflon dielectric.		
Scale	Drawing No.	File Name
2:1	F/FSF42	FSF42