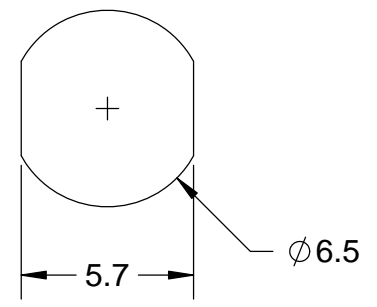
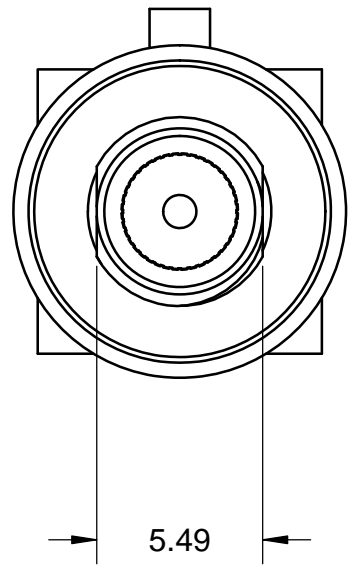
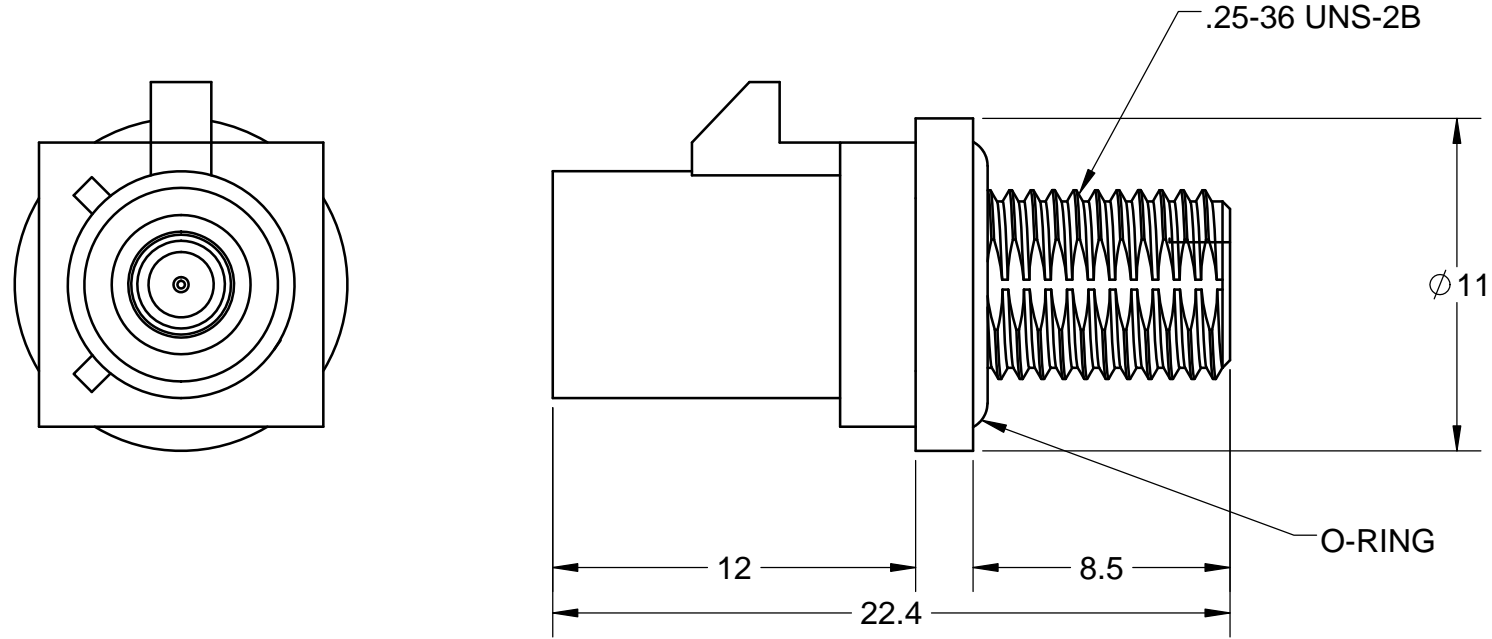
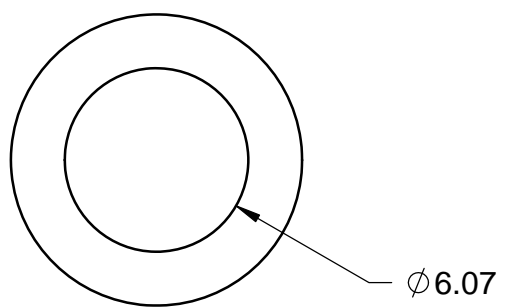
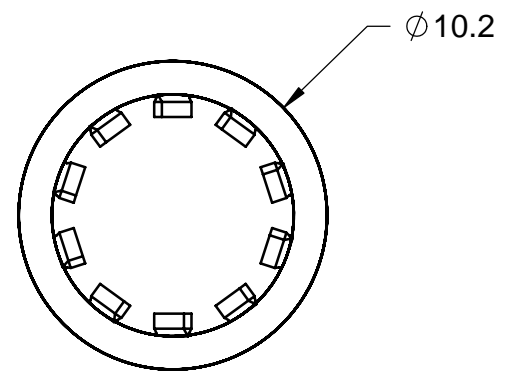
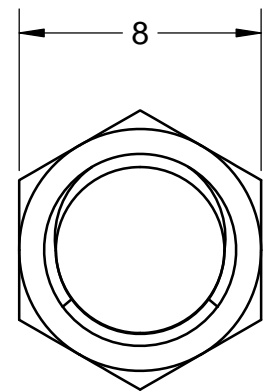
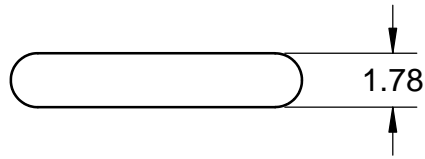
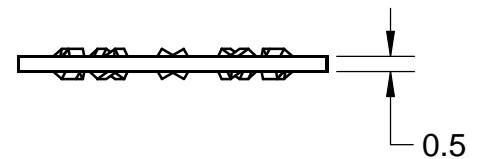
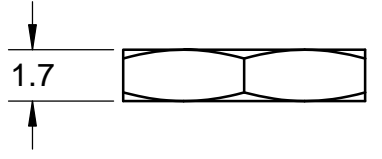


ITEM:	MATERIAL:	FINISH:	NOTES:
CONNECTOR BODY	BRASS, NOTE 1	NICKEL, NOTE 9	1. PER QQ-B-626 2. PER QQ-S-764 3. PER QQ-C-530 4. PER QQ-B-750 5. PER MIL-P-19468 6. PER ZZ-R-765 7. PER WW-T-799 8. GOLD PLATED 5µin MIN. OVER NICKEL PLATE 50µin MIN. OVER COPPER STRIKE. 9. NICKEL PLATE 100µin MIN. OVER COPPER STRIKE. 10. PER ASTM-A967 11. GOLD PLATE 30µin MIN. OVER NICKEL PLATE 50µin MIN. OVER COPPER STRIKE. 12. TIN ZINC PLATE 100µin MIN. OVER COPPER STRIKE.
CENTER CONTACT	BRASS, NOTE 1	GOLD, NOTE 11	
INSULATION	TEFLON, NOTE 5	-----	
FERRULE			
GASKET	SILICONE, NOTE 6	-----	
HEX NUT	BRASS, NOTE 1	NICKEL, NOTE 9	
LOCK WASHER	BRASS, NOTE 1	NICKEL, NOTE 9	
SPACER	TEFLON, NOTE 5	-----	
SOLDER SLEEVE	BRASS, NOTE 1	GOLD, NOTE 8	

REVISIONS				
REV	ECR	DESCRIPTION	DRAWN	DATE
1		ENGINEERING RELEASE	P. BURDGE	10-22-2015



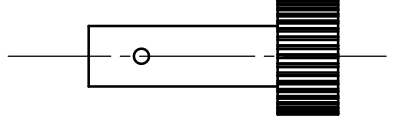
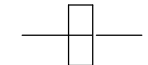
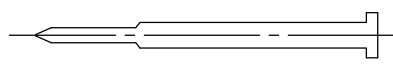
SUGGESTED PANEL CUTOUT



NUT, HEX

WASHER

O-RING



CENTER PIN

SPACER

SOLDER SLEEVE

PROPRIETARY AND CONFIDENTIAL
 UNLESS OTHERWISE SPECIFIED: THIS DOCUMENT CONTAINS LIGHORSE TECHNOLOGIES INFORMATION. REPRODUCTION, USE, DISCLOSURE OR TRANSMITTAL OF ALL OR ANY PART OF THIS DOCUMENT IS PROHIBITED EXCEPT TO THE EXTENT APPROVED IN WRITING BY AN AUTHORIZED REPRESENTATIVE OF LIGHORSE TECHNOLOGIES. LIGHORSE TECHNOLOGIES RESERVES ALL RIGHTS UNDER PATENTS, TRADEMARKS, COPY RIGHTS AND TRADE SECRETS. COPY RIGHTS OF LIGHORSE TECHNOLOGIES 2011, ALL RIGHTS RESERVED.



DO NOT SCALE DRAWING	
TOLERANCES UNLESS OTHERWISE SPECIFIED	
DIMENSIONS ARE IN MILLIMETERS	
X	= ±0.5
X.X	= ±0.25
X.XX	= ±0.13
ANGLE	= ±30°
THIRD ANGLE PROJECTION	
CUSTOMER APPROVAL	
SIGN / DATE:	
ENG APPR.	
CHECKED	
DRAWN	P. BURDGE
NAME	DATE

Lighthorse Technologies San Diego, CA WWW.RFCONNECTOR.COM	
TITLE: FAKRA, D TYPE, PLUG, FRONT MNT, O-RING, NICKEL, TEFLON, VIOLET	
SIZE	REV
B	1
PART/DWG. NO:	FILE NAME
FKF(D)13NT-113	
SCALE: 4:1	SHEET 1 OF 1