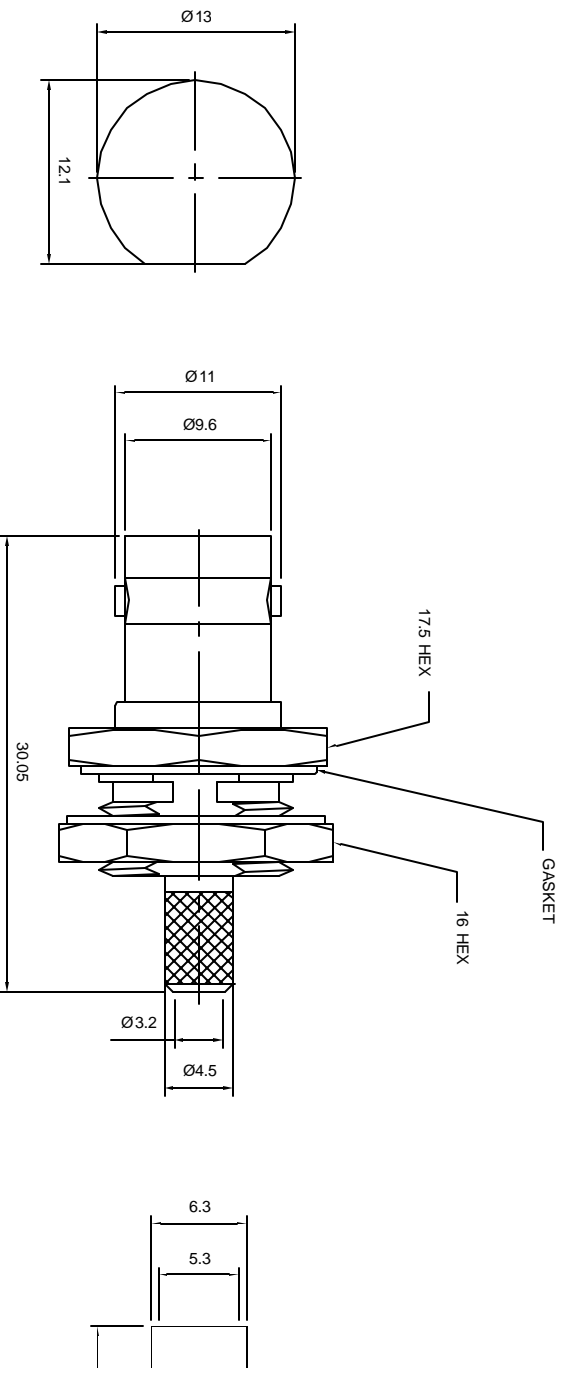
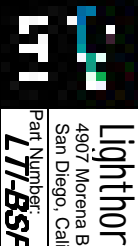


	Tolerances 1-20=+/-0.2 20-30=+/-0.3 30-40=+/-0.4 40-50=+/-0.5 50-100=+/-0.75 100-300=+/-1.5 Angles=+/-1	Dimensions are in Millimeters	Revisions Description/Approved/Date	
NOTES (plating thickness in micro-inches): 5. Per 6. Per 1. Per 00B-626 7. Per 8. Gold 2. Per 00S-764 3. Per 00C-530 nickel 4. Per 00B-750 copper				



ITEM	MATERIAL	FINISH	 Lighthouse 4907 Morena B San Diego, Calif Part Number: LT1-BSF
Connector Body	Brass, Note 1	Nickel, Note 9	
Center Contact: Female	Brass, Note 1	Gold, Note 11	
Insulation	Teflon, Note 5	None	
Ferrule	Annealed Copper, Note 7	Same as body	
Gasket	Silicone Rubber, Note 6	None	
Hex Nut	Brass, Note 1	Same as body	
Lock Washer	Brass, Note 1	Same as body	
Description BNC front mount bulkhead cr			
Scale 2:1		Drawing No. BNC/BSF1;	