

All components used in this connector conform to RoHS standards.



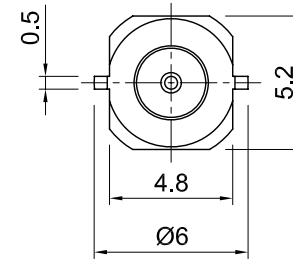
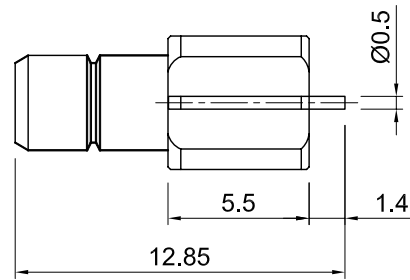
**Tolerances**

- 1-20=+/-0.2
- 20-30=+/-0.3
- 30-40=+/-0.4
- 40-50=+/-0.5
- 50-100=+/-0.75
- 100-300=+/-1.5
- Angles=+/-1

**Dimensions are in Millimeters**

Revisions Description/Approved/Date	Approved M.H.	Date 08/05/02
	Checked M.H.	Date 08/05/02
	Drawn K.R.E.	Date 08/01/02
NOTES (plating thickness in micro-inches):	5. Per MIL-P-19468	9. Nickel pl. 100 min. over copper strike
1. Per QQ-B-626	6. Per ZZ-R-765	10. Per QQ-P-35
2. Per QQ-S-764	7. Per WW-T-799	11. Gold pl. 30 min. over nickel pl. 50 min. over copper strike
3. Per QQ-C-530	8. Gold pl. 5 min. over nickel pl. 50 min. over copper strike	
4. Per QQ-B-750		

**Approved by:**  
**Date:**



ITEM	MATERIAL	FINISH
Connector Body	Brass, Note 1	Gold, Note 8
Center Contact: Female	Phosphor Bronze, Note 4	Gold, Note 11
Insulation	Teflon, Note 5	None
Ferrule	--	--
Gasket	--	--
Hex Nut	--	--
Lock Washer	--	--



**Lighthouse Technologies, Inc.**  
5640 Kearny Mesa Road, Suite N  
San Diego, California 92111  
Part Number:  
**LTI-7SBSF96GT**

Description 75 Ohm SMB edge card surface mount PCB jack with solder post.		
Gold plated brass body, teflon dielectric.		
Scale 4:1	Drawing No. SMB/7SBSF96	File Name 7SBSF96