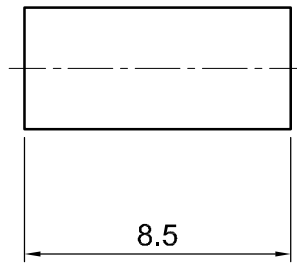
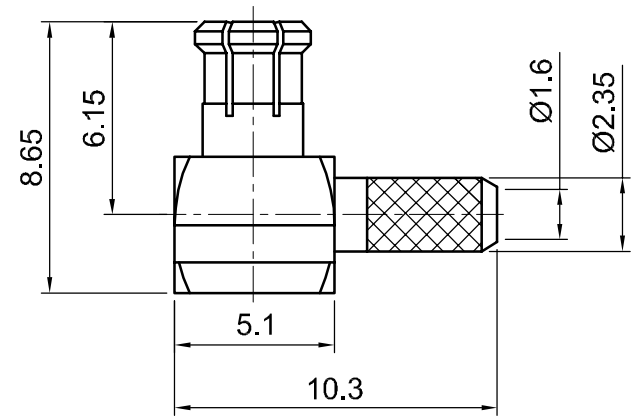
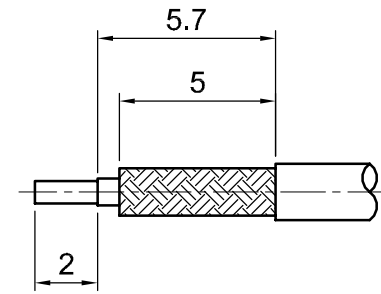


**Tolerances**  
 1-20=+/-0.2  
 20-30=+/-0.3  
 30-40=+/-0.4  
 40-50=+/-0.5  
 50-100=+/-0.75  
 100-300=+/-1.5  
 Angles=+/-1  
**Dimensions are in Millimeters**

Revisions Description/Approved/Date	Approved M.H.	Date 05/30/00
1. Length changed from 10 to 10.3 mm / M.H. / 06/13/01	Checked M.H.	Date 05/30/00
	Drawn K.R.E.	Date 05/29/00
NOTES (plating thickness in micro-inches):		
1. Per QQ-B-626	5. Per MIL-P-19468	9. Nickel pl. 100 min. over copper strike
2. Per QQ-S-764	6. Per ZZ-R-765	10. Per QQ-P-35
3. Per QQ-C-530	7. Per WW-T-799	11. Gold pl. 30 min. over nickel pl. 50 min. over copper strike
4. Per QQ-B-750	8. Gold pl. 5 min. over nickel pl. 50 min. over copper strike	

**RECOMMENDED STRIPPING DIMS**



ITEM	MATERIAL	FINISH
Connector Body	Phosphor Bronze, Note 4	Gold, Note 8
Center Contact: Male	Brass, Note 1	Gold, Note 11
Insulation	Teflon, Note 5	None
Ferrule	Annealed Copper, Note 7	Same as body
Gasket	--	--
Hex Nut	--	--
Lock Washer	--	--

**Lighthouse Technologies, Inc.**  
 5640 Kearny Mesa Road, Suite N  
 San Diego, California 92111  
 Part Number:  
***LTI-7MXLM11GT-179***

Description 75 ohm MCX right angle crimp plug for RG-179. Gold plated		
body, teflon dielectric.		
Scale 3:1	Drawing No. MCX/MXLM11-179	File Name MXLM11-179