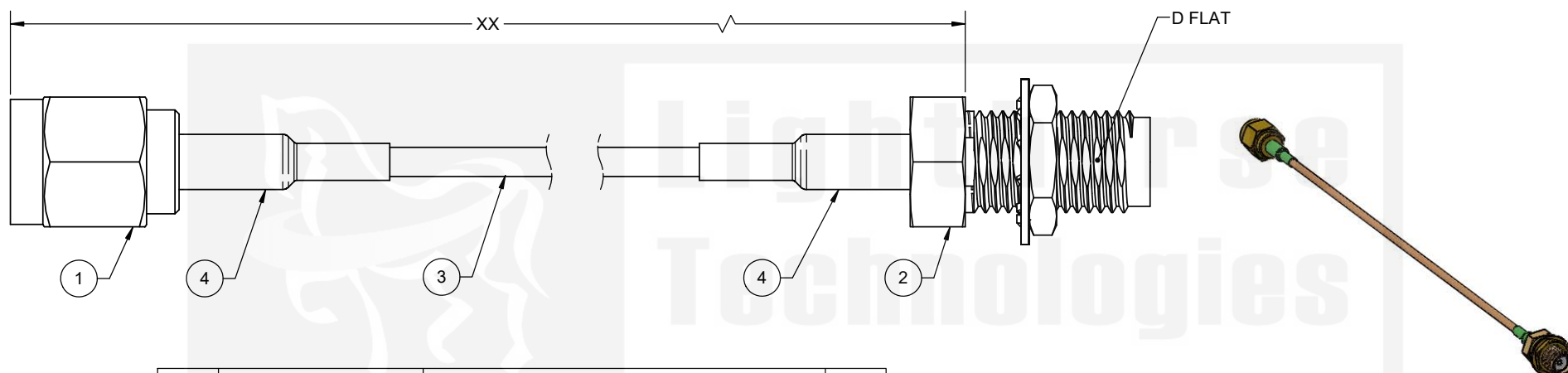


-XX IN THE ENDING OF THE CABLE PART NUMBER IS CALLING OUT THE LENGTH OF THE ASSEMBLY FROM CENTER TO MATING FLANGE OF CONNECTORS. EXAMPLES SHOWN BELOW:

LTI P/N: CBG-SAF3GT-SAMGT-4IN (4 INCHES)
CBG-SAF3GT-SAMGT-10IN (10 INCHES)

REVISIONS				
REV	ECR	DESCRIPTION	DRAWN	DATE
1		PRODUCTION RELEASE	M. LARSEN	02/23/2023




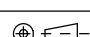
ITEM	PART NUMBER	DESCRIPTION	QTY
1	SASM11GT-316	SMA, STRAIGHT, PLUG, CABLE CRIMP	1
2	SASF13RGT-316	SMA, STRAIGHT, JACK, BLKHD, CABLE CRIMP	1
3	RG-178	CABLE, RG-178 COAX	AR
4	1635F-1/8"	.125 (1/8) DIA, .75 LENGTH, GREEN	2

SCALE: NONE

PROPRIETARY AND CONFIDENTIAL

UNLESS OTHERWISE SPECIFIED: THIS DOCUMENT CONTAINS LIGHTHORSE TECHNOLOGIES INFORMATION. REPRODUCTION, USE, DISCLOSURE OR TRANSMITTAL OF ALL OR ANY PART OF THIS DOCUMENT IS PROHIBITED EXCEPT TO THE EXTENT APPROVED IN WRITING BY AN AUTHORIZED REPRESENTATIVE OF LIGHTHORSE TECHNOLOGIES. LIGHTHORSE TECHNOLOGIES RESERVES ALL RIGHTS UNDER PATENTS, TRADEMARKS, COPYRIGHTS AND TRADE SECRETS. COPYRIGHTS OF LIGHTHORSE TECHNOLOGIES 2011, ALL RIGHTS RESERVED.



DO NOT SCALE DRAWING				Lighthouse Technologies San Diego, CA WWW.RFCONNECTOR.COM		
TOLERANCES UNLESS OTHERWISE SPECIFIED						
DIMENSIONS ARE IN MILLIMETERS					TITLE: CABLE ASSEMBLY, CRIMP TO SMA, STRAIGHT JACK BLKHD, CRIMP TO SMA, STRAIGHT PLUG, USING RG-178 COAX	
X = ±0.5 X.X = ±0.25 X.XX = ±0.13 ANGLE = ±30°						
CUSTOMER APPROVAL			SIZE: B PART/DWG. NO: CBG-SAF3GT-SAMGT-XX REV: A			
SIGN / DATE:						
ENG APPR.	P. BURDGE	02/23/2023	SCALE: 3:1 FILE NAME SHEET 1 OF 1			
CHECKED	M. HELD	02/23/2023				
DRAWN	M. LARSEN	02/23/2023				
	NAME	DATE				