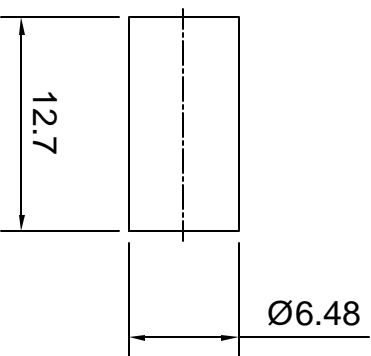
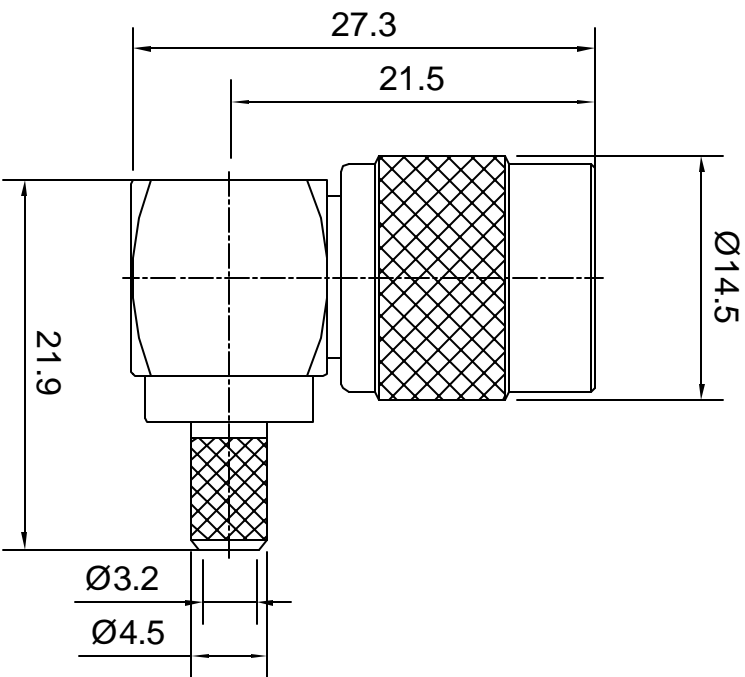



Revisions		Approved	Date
Description/Approved/Date	Checked	M.H.	7/12/99
	Drawn	M.H.	7/12/99
	Date	K.R.E.	7/11/99

Tolerances	
1-20=+/-0.2	
20-30=+/-0.3	
30-40=+/-0.4	
40-50=+/-0.5	
50-100=+/-0.75	
100-300=+/-1.5	
Angles=+/-1	

Dimensions are in Millimeters

NOTES (plating thickness in micro-inches):	5. Per MIL-P-19468	9. Nickel pl. 100 min. over copper strike
1. Per QQ-B-626	6. Per ZZ-R-765	10. Per QQ-P-35
2. Per QQ-S-764	7. Per WW-T-799	11. Gold pl. 30 min. over nickel pl. 50 min. over copper strike
3. Per QQ-C-530	8. Gold pl. 5 min. over nickel pl. 50 min. over copper strike	
4. Per QQ-B-750		



ITEM	MATERIAL	FINISH	Description
Connector Body	Brass, Note 1	Nickel, Note 9	 <p>Lighthorse Technologies, Inc. 4907 Morena Boulevard, #1411 San Diego, California 92117 Part Number: LT-TLM11NT-58</p>
Center Contact: Male	Brass, Note 1	Gold, Note 11	
Insulation	Teflon, Note 5	None	
Ferrule	Annealed Copper, Note 7	Same as body	
Gasket	--	--	
Hex Nut	--	--	brass body, teflon dielectric.
Lock Washer	--	--	TNC right angle crimp plug for RG-58. Nickel plated
		Scale	2:1
		Drawing No.	TNC/TLM11-58
		File Name	TLM11-58