

All components used in this connector conform to RoHS standards.



Tolerances
1-20=+/-0.2
20-30=+/-0.3
30-40=+/-0.4
40-50=+/-0.5
50-100=+/-0.75
100-300=+/-1.5
Angles=+/-1

Dimensions are in Millimeters

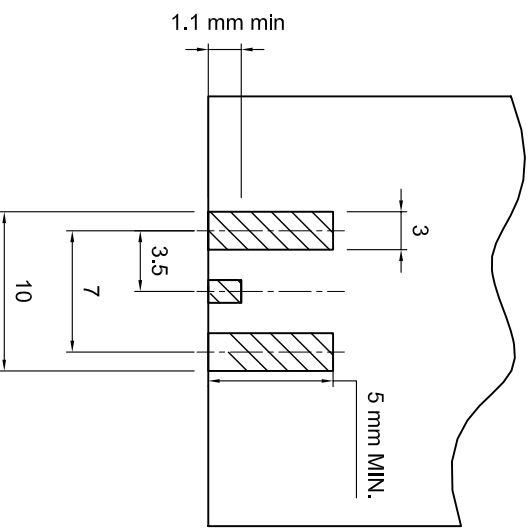
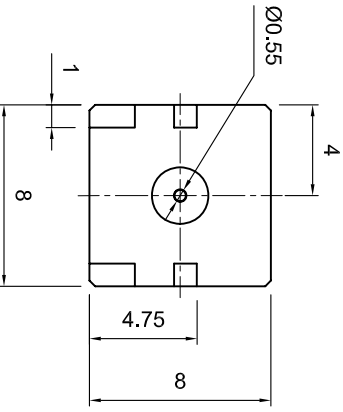
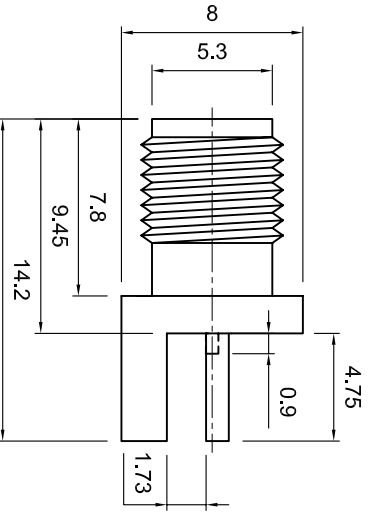
Revisions	Approved	Date
Description/Approved/Date pad layout pin depth added(1.1 mm), Pin pad corrected to flush, 09/16/09 mh	M.H. Checked M.H.	11/16/04 Date 11/16/04
Drawn K.R.E.		Date 11/16/04

NOTES (plating thickness in microinches):

- Per QQ-B-626
- Per QQ-S-764
- Per QQ-C-530
- Per QQ-B-750
- Per MIL-P-19488
- Per ZZ-R-765
- Per WW-1-799
- Gold pl. 5 min. over nickel pl. 50 min. over copper strike
- Nickel pl. 100 min. over copper strike
- Per QQ-P-35
- Gold pl. 30 min. over nickel pl. 50 min. over copper strike


**Electrical Ratings**

Frequency Range: DC ~ 26.5 GHz  
 Impedance: 50 ohm  
 Insulation Resistance: 10000 Mohm min  
 Dielectric Withstanding Volatage: 1000 (Vrms min. at sea level)



**RECOMMENDED LANDING PAD DIMENSIONS**

ITEM	MATERIAL	FINISH
Connector Body	Brass, Note 1	Gold, Note 8
Center Contact: F	BeCu, Note 3	Gold, Note 11
Insulation	Teflon, Note 5	None
Ferrule		
Gasket		
Hex Nut		
Lock Washer		



**Lighthouse Technologies, Inc.**  
 9511 Ridgely Court, Suite B  
 San Diego, California 92123  
 Part Number:  
**LTI-SASF55ZGT-P2**

Description	SMA 26.5 GHz end launch jack for a .062" PCB board.
Scale	Gold plated brass body, Teflon dielectric.
Drawing No.	File Name
1:1	SASF55ZGT-P2