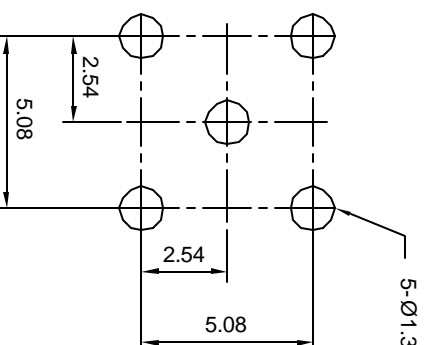
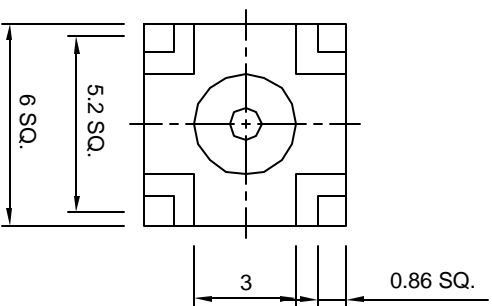
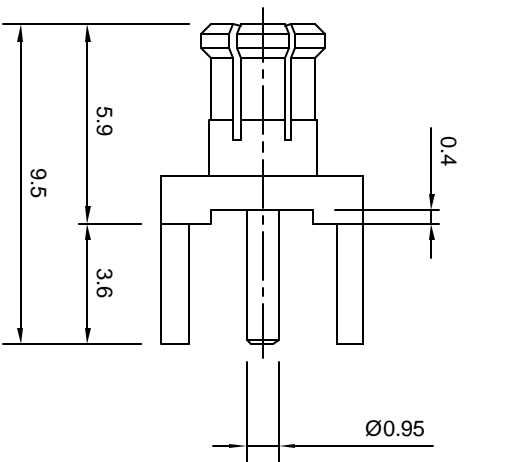



<p>Tolerances</p> <p>1-20=±/0.2 20-30=±/0.3 30-40=±/0.4 40-50=±/0.5 50-100=±/0.75 100-300=±/1.5 Angles=±/1</p> <p>Dimensions are in Millimeters</p>		<p>Revisions</p> <table border="1"> <thead> <tr> <th>Description/Approved/Date</th> <th>Approved</th> <th>Date</th> </tr> </thead> <tbody> <tr> <td></td> <td>M.H.</td> <td>05/19/00</td> </tr> <tr> <td></td> <td>M.H.</td> <td>05/17/00</td> </tr> <tr> <td></td> <td>K.R.E.</td> <td>05/15/00</td> </tr> </tbody> </table>		Description/Approved/Date	Approved	Date		M.H.	05/19/00		M.H.	05/17/00		K.R.E.	05/15/00
Description/Approved/Date	Approved	Date													
	M.H.	05/19/00													
	M.H.	05/17/00													
	K.R.E.	05/15/00													
<p>NOTES (plating thickness in micro-inches):</p> <ol style="list-style-type: none"> Per QQ-B-626 Per QQ-S-764 Per QQ-C-530 Per QQ-B-750 Per MIL-P-19468 Per ZZ-R-765 Per WW-T-799 Gold pl. 5 min. over nickel pl. 50 min. over copper strike Nickel pl. 100 min. over copper strike Per QQ-P-35 Gold pl. 30 min. over nickel pl. 50 min. over copper strike 															



**RECOMMENDED
PCB HOLE**

ITEM	MATERIAL	FINISH	Description
Connector Body	Brass, Note 1	Gold, Note 8	 <p>Lighthorse Technologies, Inc. 4907 Morena Boulevard, #1411 San Diego, California 92117 Part Number: LT-MXSM54GT</p>
Center Contact: Male	Brass, Note 1	Gold, Note 11	
Insulation	Teflon, Note 5	None	
Ferrule	--	--	
Gasket	--	--	
Hex Nut	--	--	Description MCX vertical PCB thru hole plug. Gold plated brass body. Teflon dielectric. Scale 4:1
Lock Washer	--	--	
		Drawing No. MCXMXSM54 File Name MXSM54	