

All components used in this connector conform to RoHS standards.

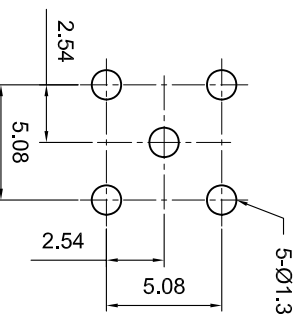
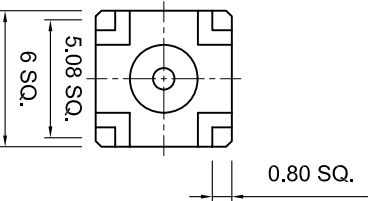
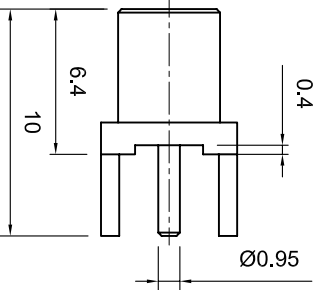
Approved by:
Date:



Tolerances
 1-20=+/-0.2
 20-30=+/-0.3
 30-40=+/-0.4
 40-50=+/-0.5
 50-100=+/-0.75
 100-300=+/-1.5
 Angles=+/-1
Dimensions are in Millimeters

Revisions		Approved	Date
Description/Approved/Date	M.H.	M.H.	8/13/99
	Checked	M.H.	Date 8/13/99
	Drawn	K.R.E.	Date 8/13/99

NOTES (plating thickness in microinches):
 1. Per QQ-B-626
 2. Per QQ-S-764
 3. Per QQ-C-530
 4. Per QQ-B-750
 5. Per MIL-P-19488
 6. Per ZZ-R-765
 7. Per WW-1-799
 8. Gold pl. 5 min. over nickel pl. 50 min. over copper strike
 9. Nickel pl. 100 min. over copper strike
 10. Per QQ-P-35
 11. Gold pl. 30 min. over nickel pl. 50 min. over copper strike



RECOMMENDED
PCB HOLE

ITEM	MATERIAL	FINISH
Connector Body	Brass, Note 1	Gold, Note 8
Center Contact: Female	Beryllium Copper, Note 3	Gold, Note 11
Insulation	Teflon, Note 5	None
Ferrule	--	--
Gasket	--	--
Hex Nut	--	--
Lock Washer	--	--

Lighthouse Technologies, Inc. 5640 Keamy Mesa Road, Suite N San Diego, California 92111 Part Number: LTI-MXSF54GT		
Description	MCX vertical PCB thru hole jack. Gold plated brass body.	
Scale	3:1	
Drawing No.	File Name	
	MXSF54	