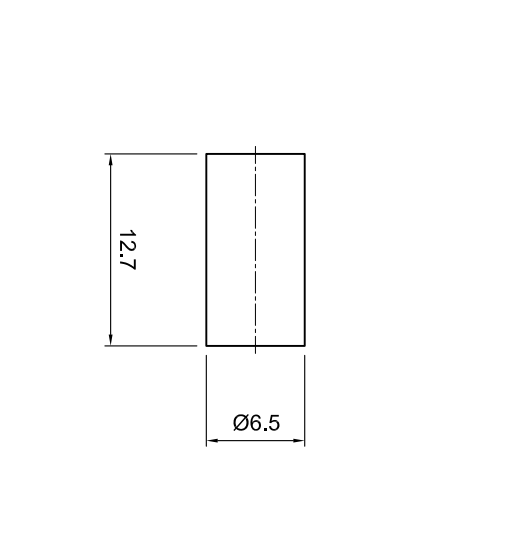
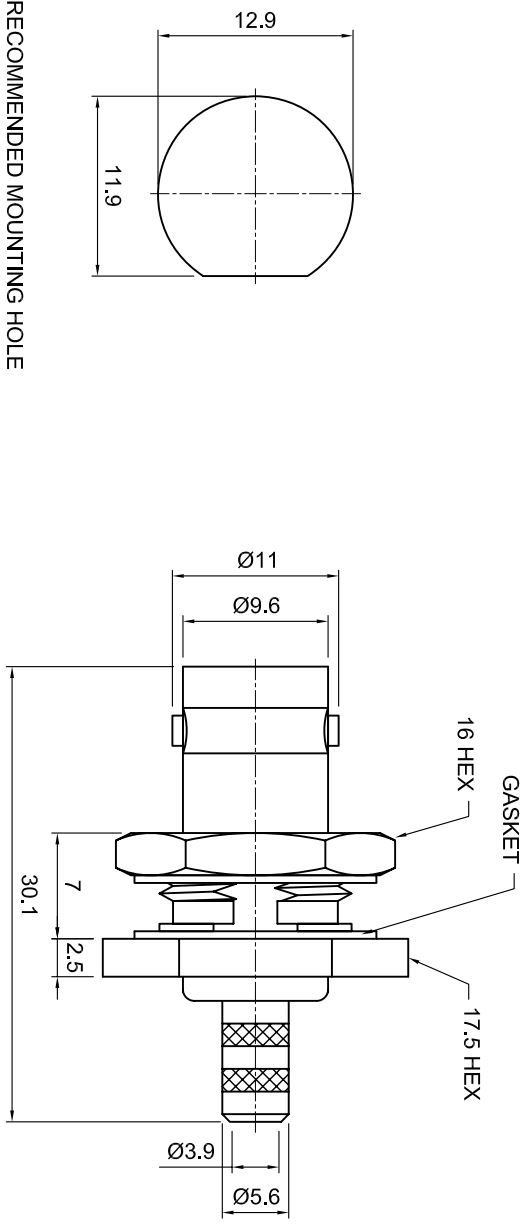


Tolerances 1-20=+/-0.2 20-30=+/-0.3 30-40=+/-0.4 40-50=+/-0.5 50-100=+/-0.75 100-300=+/-1.5 Angles=+/-1	Dimensions are in Millimeters	
	Revisions Description/Approval/Date Checked M.H. Date 11/05/96	Approved M.H. Date 11/06/96
NOTES (plating thickness in microinches): 1. Per QQ-B-626 2. Per QQ-S-764 3. Per QQ-C-530 4. Per QQ-B-750	5. Per MIL-P-19488 6. Per ZZ-R-765 7. Per WW-1-799 8. Gold pl. 5 min. over nickel pl. 50 min. over copper strike 9. Nickel pl. 100 min. over copper strike 10. Per QQ-P-35 11. Gold pl. 5 min. over nickel pl. 50 min. over copper strike	Drawn K.R.E. Date 11/06/96



RECOMMENDED MOUNTING HOLE

ITEM	MATERIAL	FINISH
Connector Body	Brass, Note 1	Gold, Note 8
Center Contact: F	Phosphor Bronze, Note 4	Gold, Note 11
Insulation	Teflon, Note 5	None
Ferrule	Annealed Copper, Note 7	Same as body
Gasket	Silicone Rubber, Note 6	None
Hex Nut	Brass, Note 1	Same as body
Lock Washer	Brass, Note 1	Same as body

Lighthorse Technologies, Inc.
5640 Keamy Mesa Rd, Suite N
San Diego, California 92111
Part Number: **LT1-7BSF13RNT-59**

Description 75 OHM BNC Bulkhead Jack for RG 59 cab/ve		
Scale 1:1	Drawing No. 7BSF13RNT-59	File Name 7BSF13RNT-59